

CD 405 : Fluency and Voice Disorders , Section 1

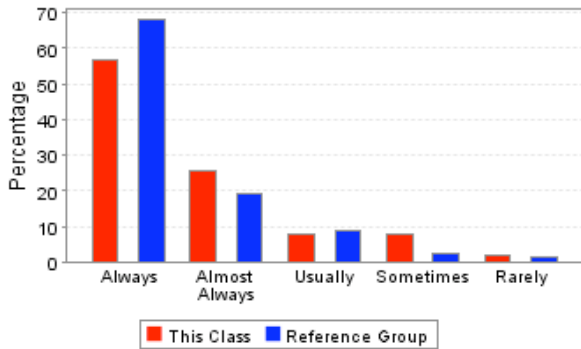
Course	CD 405, Section 1
Course Title	Fluency and Voice Disorders
Instructor	SNYDER GREGORY
Semester	Spring Semester 2005 - 2006
Department	COMMUNICATIVE DISORDERS
School	SCHOOL OF APPLIED SCIENCES
Reference Group	SCHOOL OF APPLIED SCIENCES Upper Division
Students Enrolled	55
Students Responding	51
Percent Responding	92.73%
Date of Report	Tue Jun 09 11:16:10 CDT 2009

USER CAUTIONS :

- These survey results should not be used for direct comparisons between, or rankings of, faculty. Many factors (including class size, class level, instructor gender, whether the class is required, and the students's class, expected grade, GPA, major, and gender) are known to bias survey responses. No attempt has been made to analyze for these factors.
- The enrollment for each course was captured at the time teacher evaluations were performed and may not match the final enrollment.
- The "Overall Rating" is taken as an average of the responses for question 11 (How would you rate the instructor's overall performance in this course?).

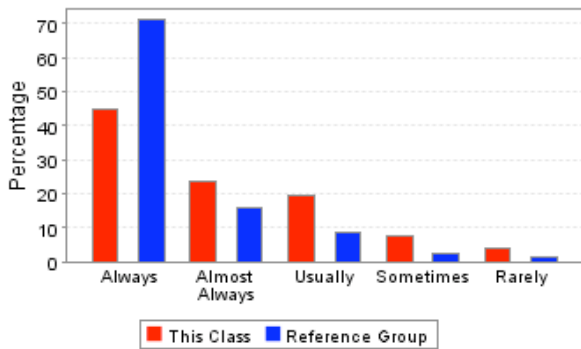
Overall Rating : ★★☆☆

1. Was the instructor well organized and prepared for class sessions?



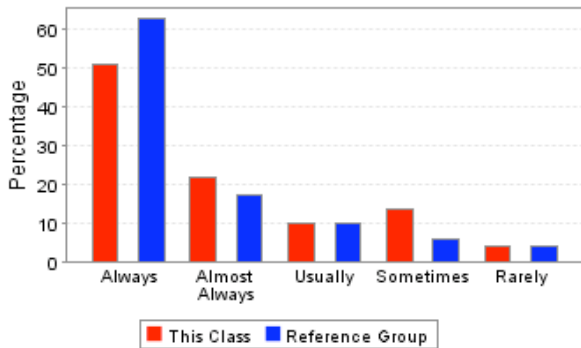
	This Course	Reference Group
Always	56.86%	67.87%
Almost Always	25.49%	19.07%
Usually	7.84%	9.01%
Sometimes	7.84%	2.53%
Rarely	1.96%	1.52%
Total Responses	51	2375

2. Did the instructor speak clearly and distinctly?



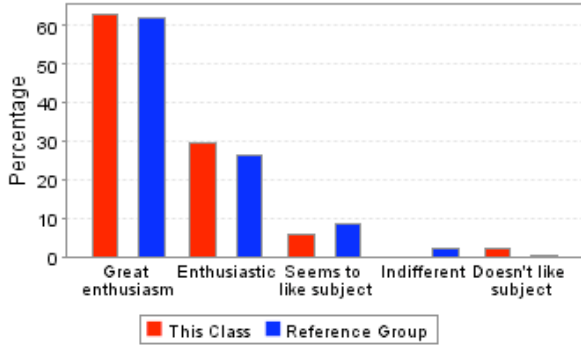
	This Course	Reference Group
Always	45.10%	71.07%
Almost Always	23.53%	15.83%
Usually	19.61%	8.88%
Sometimes	7.84%	2.69%
Rarely	3.92%	1.52%
Total Responses	51	2375

3. Did the instructor's classroom lectures and activities help you in learning the material?



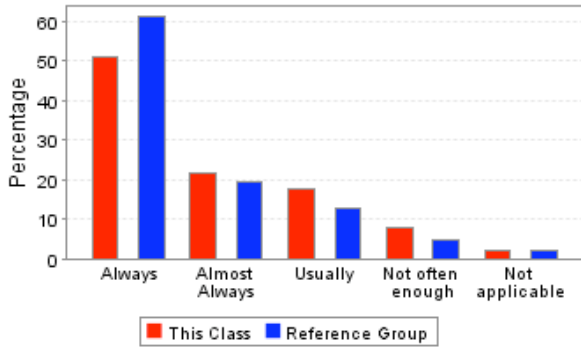
	This Course	Reference Group
Always	50.98%	62.61%
Almost Always	21.57%	17.35%
Usually	9.80%	9.98%
Sometimes	13.73%	5.98%
Rarely	3.92%	4.08%
Total Responses	51	2375

4. Which best describes the instructor's attitude toward the subject matter?



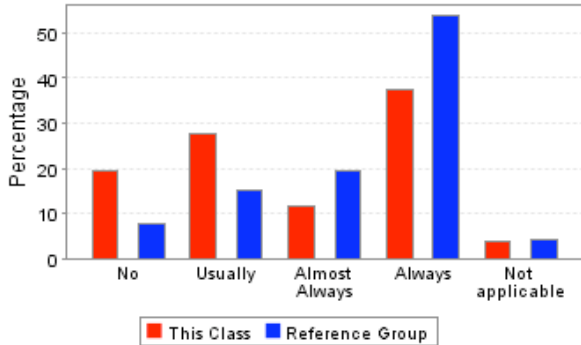
	This Course	Reference Group
Great enthusiasm	62.75%	62.19%
Enthusiastic	29.41%	26.60%
Seems to like subject	5.88%	8.72%
Indifferent	0.00%	2.01%
Doesn't like subject	1.96%	0.47%
Total Responses	51	2534

5. Were the examinations appropriate for assessing mastery of the course material?



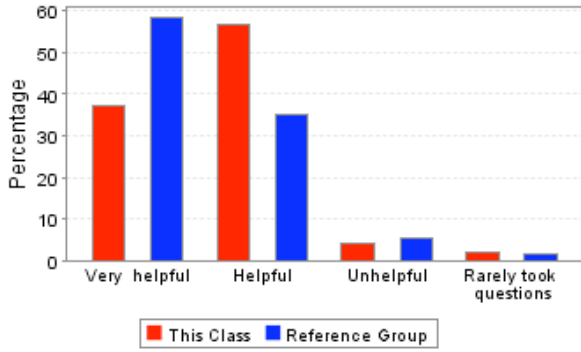
	This Course	Reference Group
Always	50.98%	60.97%
Almost Always	21.57%	19.26%
Usually	17.65%	12.83%
Not often enough	7.84%	4.81%
Not applicable	1.96%	2.13%
Total Responses	51	2534

6. Did the instructor return assignments and examinations in a reasonable period of time?



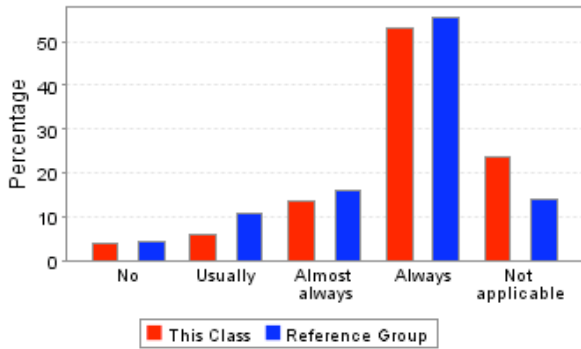
	This Course	Reference Group
No	19.61%	7.77%
Usually	27.45%	15.15%
Almost Always	11.76%	19.30%
Always	37.25%	53.67%
Not applicable	3.92%	4.10%
Total Responses	51	2534

7. How helpful were the instructor's responses to students' questions in class?



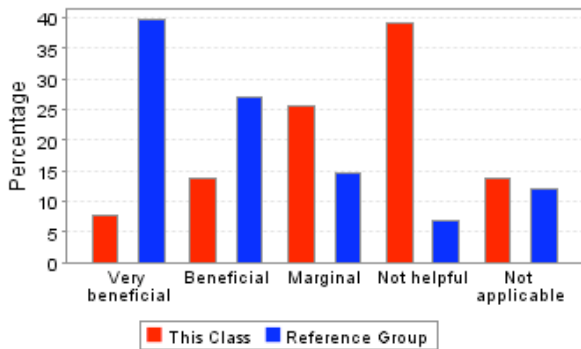
	This Course	Reference Group
Very helpful	37.25%	58.23%
Helpful	56.86%	34.99%
Unhelpful	3.92%	5.22%
Rarely took questions	1.96%	1.56%
Total Responses	51	2375

8. If you needed assistance from the instructor outside of class, could you make satisfactory arrangements for a timely meeting?



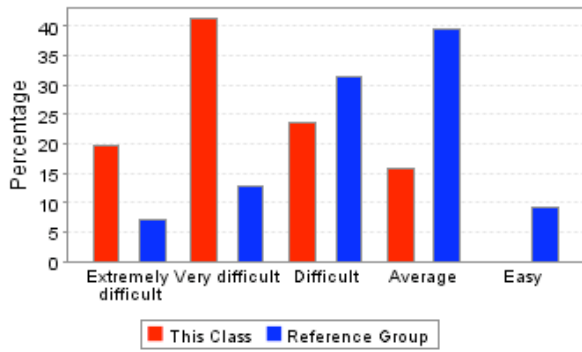
	This Course	Reference Group
No	3.92%	4.25%
Usually	5.88%	10.61%
Almost always	13.73%	15.83%
Always	52.94%	55.33%
Not applicable	23.53%	13.98%
Total Responses	51	2375

9. How beneficial were the books required for this course?



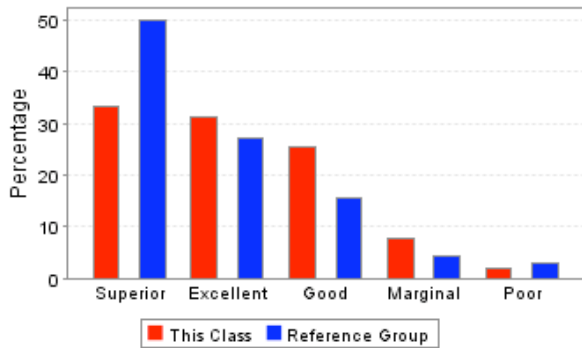
	This Course	Reference Group
Very beneficial	7.84%	39.62%
Beneficial	13.73%	27.07%
Marginal	25.49%	14.52%
Not helpful	39.22%	6.87%
Not applicable	13.73%	11.92%
Total Responses	51	2534

10. How would you rate the difficulty level of this course, compared to other courses you have taken so far at Ole Miss?



	This Course	Reference Group
Extremely difficult	19.61%	7.17%
Very difficult	41.18%	12.82%
Difficult	23.53%	31.29%
Average	15.69%	39.49%
Easy	0.00%	9.24%
Total Responses	51	2707

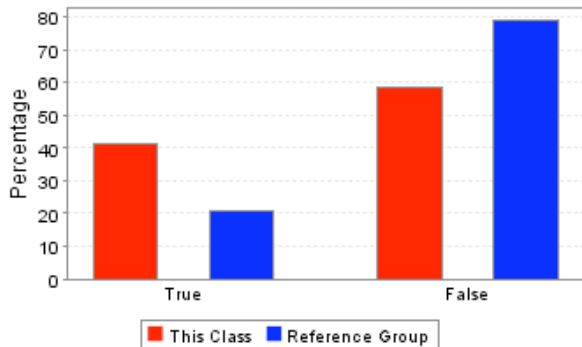
11. How would you rate the instructor's overall performance in this course?



	This Course	Reference Group
Superior	33.33%	50.02%
Excellent	31.37%	27.15%
Good	25.49%	15.63%
Marginal	7.84%	4.40%
Poor	1.96%	2.81%
Total Responses	51	2707

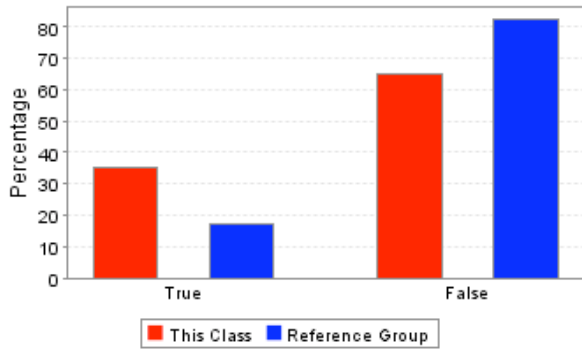
Detailed Questions

12. The content or quality of required books or other required readings was inadequate.



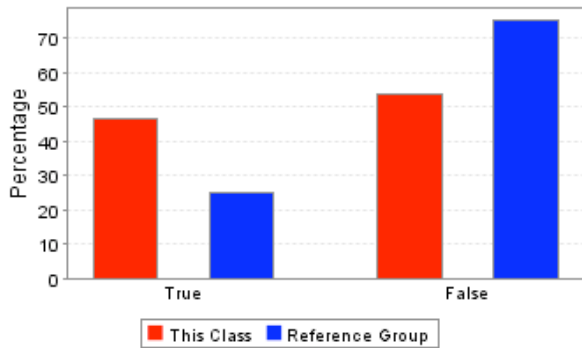
	This Course	Reference Group
True	41.46%	20.94%
False	58.54%	79.06%
Total Responses	41	1987

13. Some required books or other required readings seemed to be irrelevant to the course goals.



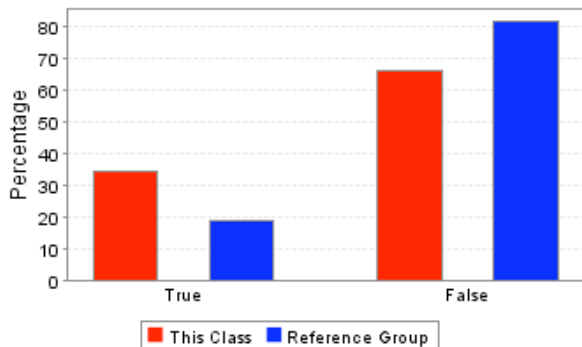
	This Course	Reference Group
True	35.00%	17.47%
False	65.00%	82.53%
Total Responses	40	1980

14. Required books or other required readings were too expensive to be a good value.



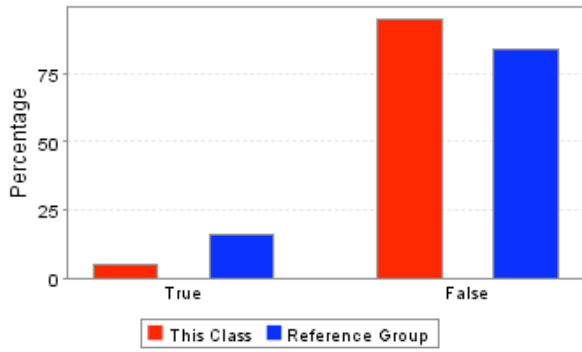
	This Course	Reference Group
True	46.34%	24.73%
False	53.66%	75.27%
Total Responses	41	1973

15. Books or other readings that were recommended (but not required) were of little value in meeting course goals.



	This Course	Reference Group
True	34.21%	18.40%
False	65.79%	81.60%
Total Responses	38	1967

16. The amount of reading required for this course was excessive.



True
False
Total
Responses

**This
Course**
4.88%
95.12%
41

**Reference
Group**
15.98%
84.02%
1971