

Teacher Evaluation Result - General and Detailed Questions

[Print this page](#) | [Close window](#)**CD 521 : Disorders of Fluency , Section 1**

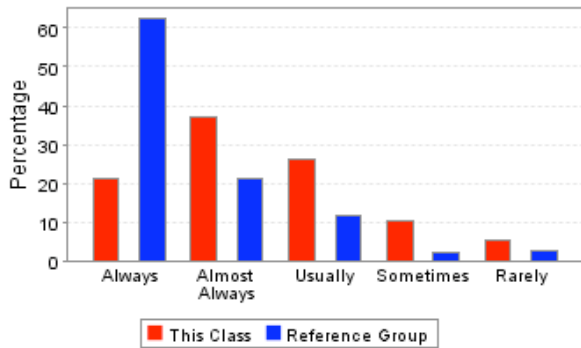
Course	CD 521, Section 1
Course Title	Disorders of Fluency
Instructor	SNYDER GREGORY
Semester	Spring Semester 2005 - 2006
Department	COMMUNICATIVE DISORDERS
School	SCHOOL OF APPLIED SCIENCES
Reference Group	SCHOOL OF APPLIED SCIENCES Graduate Division
Students Enrolled	20
Students Responding	19
Percent Responding	95.00%
Date of Report	Tue Jun 09 11:17:47 CDT 2009

USER CAUTIONS :

- These survey results should not be used for direct comparisons between, or rankings of, faculty. Many factors (including class size, class level, instructor gender, whether the class is required, and the students's class, expected grade, GPA, major, and gender) are known to bias survey responses. No attempt has been made to analyze for these factors.
- The enrollment for each course was captured at the time teacher evaluations were performed and may not match the final enrollment.
- The "Overall Rating" is taken as an average of the responses for question 11 (How would you rate the instructor's overall performance in this course?).

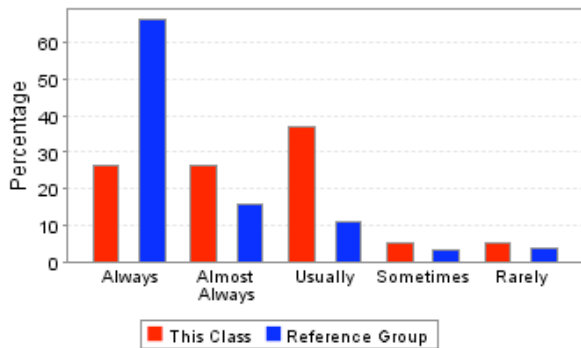
Overall Rating : ★★☆☆

1. Was the instructor well organized and prepared for class sessions?



	This Course	Reference Group
Always	21.05%	62.30%
Almost Always	36.84%	21.31%
Usually	26.32%	11.48%
Sometimes	10.53%	2.19%
Rarely	5.26%	2.73%
Total Responses	19	183

2. Did the instructor speak clearly and distinctly?



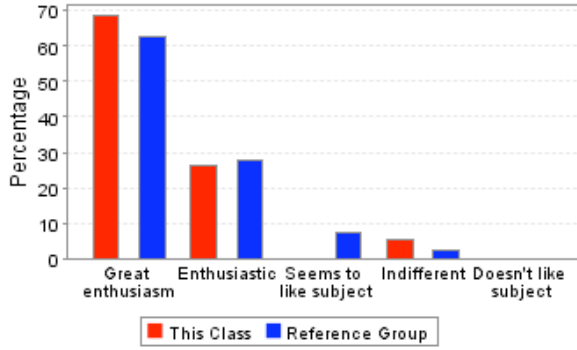
	This Course	Reference Group
Always	26.32%	66.12%
Almost Always	26.32%	15.85%
Usually	36.84%	10.93%
Sometimes	5.26%	3.28%
Rarely	5.26%	3.83%
Total Responses	19	183

3. Did the instructor's classroom lectures and activities help you in learning the material?



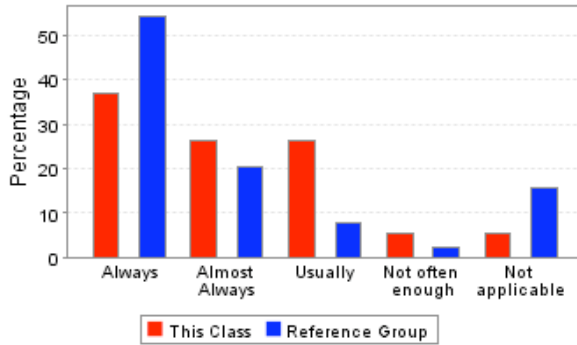
	This Course	Reference Group
Always	21.05%	59.02%
Almost Always	15.79%	18.58%
Usually	31.58%	14.21%
Sometimes	26.32%	6.01%
Rarely	5.26%	2.19%
Total Responses	19	183

4. Which best describes the instructor's attitude toward the subject matter?



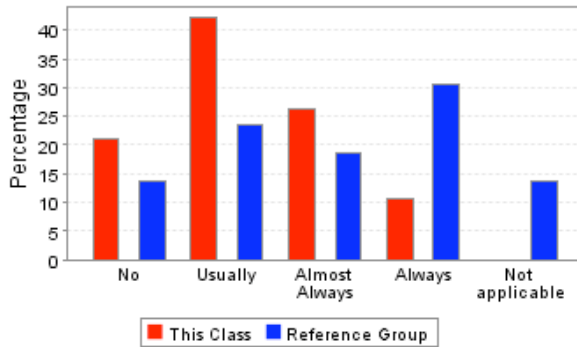
	This Course	Reference Group
Great enthusiasm	68.42%	62.84%
Enthusiastic	26.32%	27.87%
Seems to like subject	0.00%	7.10%
Indifferent	5.26%	2.19%
Doesn't like subject	0.00%	0.00%
Total Responses	19	183

5. Were the examinations appropriate for assessing mastery of the course material?



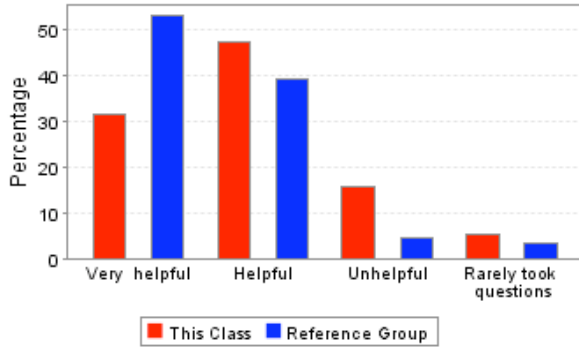
	This Course	Reference Group
Always	36.84%	54.10%
Almost Always	26.32%	20.22%
Usually	26.32%	7.65%
Not often enough	5.26%	2.19%
Not applicable	5.26%	15.85%
Total Responses	19	183

6. Did the instructor return assignments and examinations in a reasonable period of time?



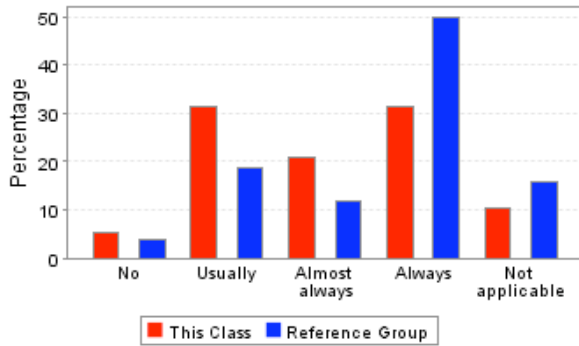
	This Course	Reference Group
No	21.05%	13.66%
Usually	42.11%	23.50%
Almost Always	26.32%	18.58%
Always	10.53%	30.60%
Not applicable	0.00%	13.66%
Total Responses	19	183

7. How helpful were the instructor's responses to students' questions in class?



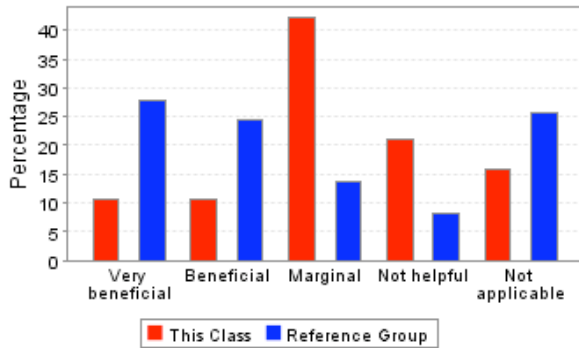
	This Course	Reference Group
Very helpful	31.58%	53.01%
Helpful	47.37%	39.34%
Unhelpful	15.79%	4.37%
Rarely took questions	5.26%	3.28%
Total Responses	19	183

8. If you needed assistance from the instructor outside of class, could you make satisfactory arrangements for a timely meeting?



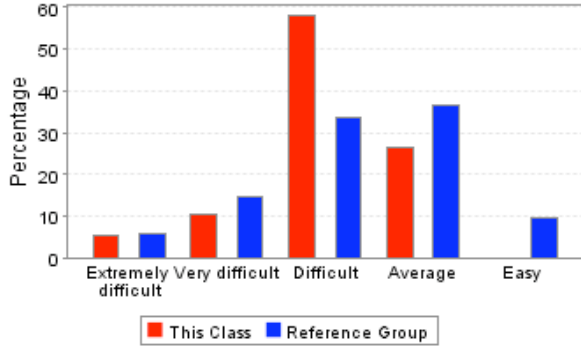
	This Course	Reference Group
No	5.26%	3.83%
Usually	31.58%	18.58%
Almost always	21.05%	12.02%
Always	31.58%	49.73%
Not applicable	10.53%	15.85%
Total Responses	19	183

9. How beneficial were the books required for this course?



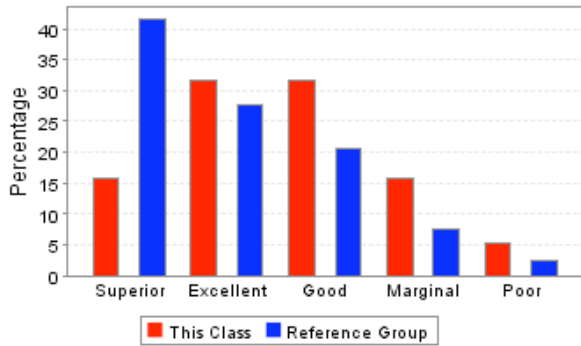
	This Course	Reference Group
Very beneficial	10.53%	27.87%
Beneficial	10.53%	24.59%
Marginal	42.11%	13.66%
Not helpful	21.05%	8.20%
Not applicable	15.79%	25.68%
Total Responses	19	183

10. How would you rate the difficulty level of this course, compared to other courses you have taken so far at Ole Miss?



	This Course	Reference Group
Extremely difficult	5.26%	5.74%
Very difficult	10.53%	14.83%
Difficult	57.89%	33.49%
Average	26.32%	36.36%
Easy	0.00%	9.57%
Total Responses	19	209

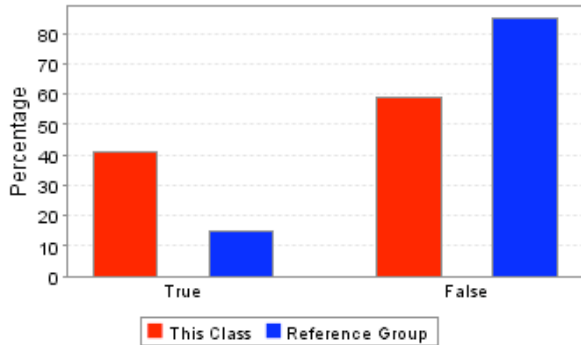
11. How would you rate the instructor's overall performance in this course?



	This Course	Reference Group
Superior	15.79%	41.63%
Excellent	31.58%	27.75%
Good	31.58%	20.57%
Marginal	15.79%	7.66%
Poor	5.26%	2.39%
Total Responses	19	209

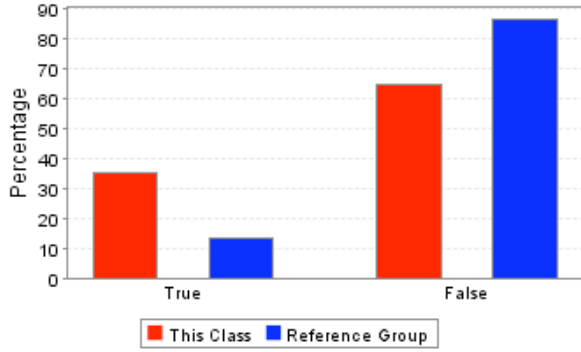
Detailed Questions

12. The content or quality of required books or other required readings was inadequate.



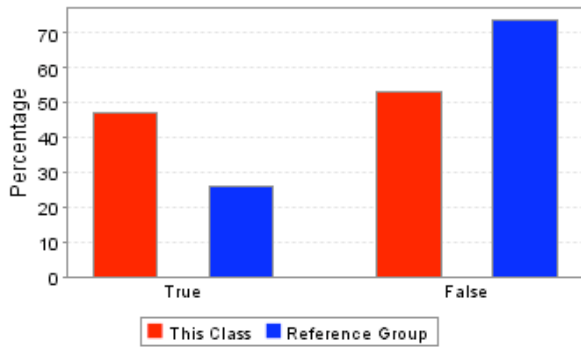
	This Course	Reference Group
True	41.18%	14.79%
False	58.82%	85.21%
Total Responses	17	169

13. Some required books or other required readings seemed to be irrelevant to the course goals.



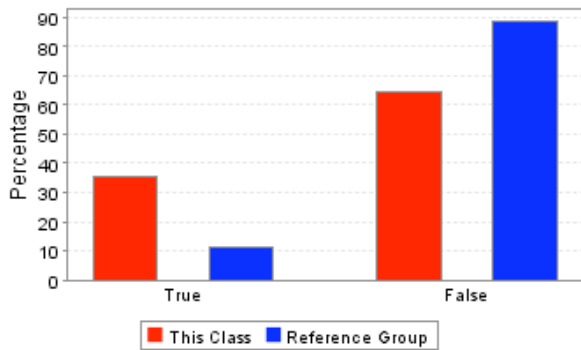
	This Course	Reference Group
True	35.29%	13.53%
False	64.71%	86.47%
Total Responses	17	170

14. Required books or other required readings were too expensive to be a good value.



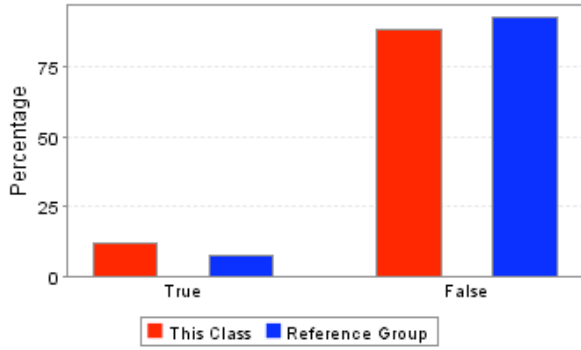
	This Course	Reference Group
True	47.06%	26.19%
False	52.94%	73.81%
Total Responses	17	168

15. Books or other readings that were recommended (but not required) were of little value in meeting course goals.



	This Course	Reference Group
True	35.29%	11.18%
False	64.71%	88.82%
Total Responses	17	170

16. The amount of reading required for this course was excessive.



	This Course	Reference Group
True	11.76%	7.06%
False	88.24%	92.94%
Total Responses	17	170