

CD 613 : Rsch Design & Anal , Section 1

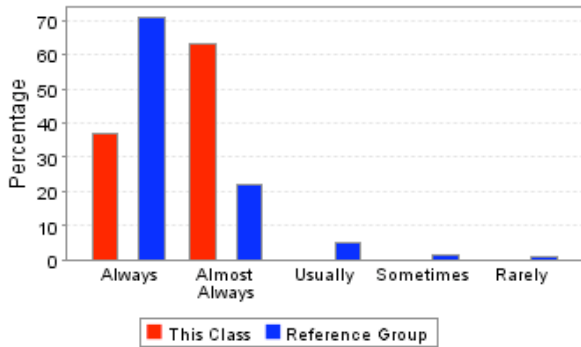
Course	CD 613, Section 1
Course Title	Rsch Design & Anal
Instructor	SNYDER GREGORY
Semester	Fall Semester 2005 - 2006
Department	COMMUNICATIVE DISORDERS
School	SCHOOL OF APPLIED SCIENCES
Reference Group	SCHOOL OF APPLIED SCIENCES Graduate Division
Students Enrolled	21
Students Responding	19
Percent Responding	90.48%
Date of Report	Wed Jun 10 10:02:56 CDT 2009

USER CAUTIONS :

- These survey results should not be used for direct comparisons between, or rankings of, faculty. Many factors (including class size, class level, instructor gender, whether the class is required, and the students's class, expected grade, GPA, major, and gender) are known to bias survey responses. No attempt has been made to analyze for these factors.
- The enrollment for each course was captured at the time teacher evaluations were performed and may not match the final enrollment.
- The "Overall Rating" is taken as an average of the responses for question 11 (How would you rate the instructor's overall performance in this course?).

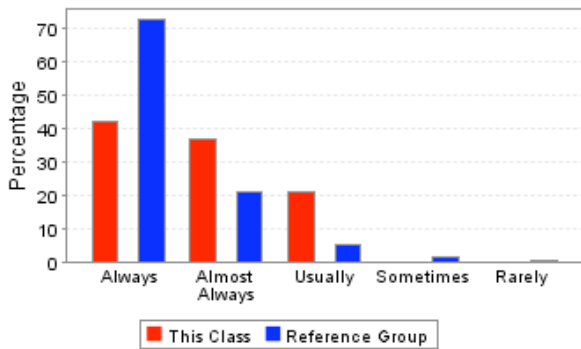
Overall Rating : ★★☆☆

1. Was the instructor well organized and prepared for class sessions?



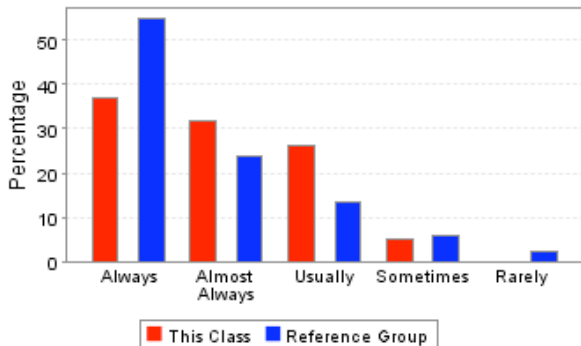
	This Course	Reference Group
Always	36.84%	70.69%
Almost Always	63.16%	21.98%
Usually	0.00%	5.17%
Sometimes	0.00%	1.29%
Rarely	0.00%	0.86%
Total Responses	19	232

2. Did the instructor speak clearly and distinctly?



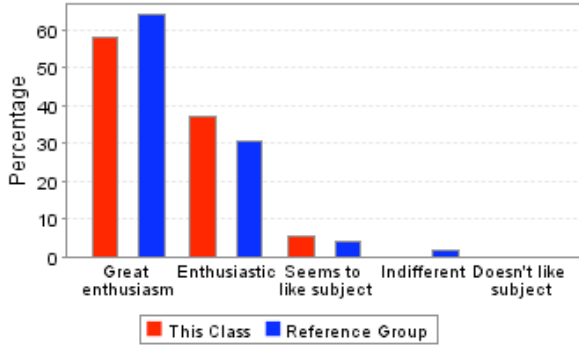
	This Course	Reference Group
Always	42.11%	72.41%
Almost Always	36.84%	20.69%
Usually	21.05%	5.17%
Sometimes	0.00%	1.29%
Rarely	0.00%	0.43%
Total Responses	19	232

3. Did the instructor's classroom lectures and activities help you in learning the material?



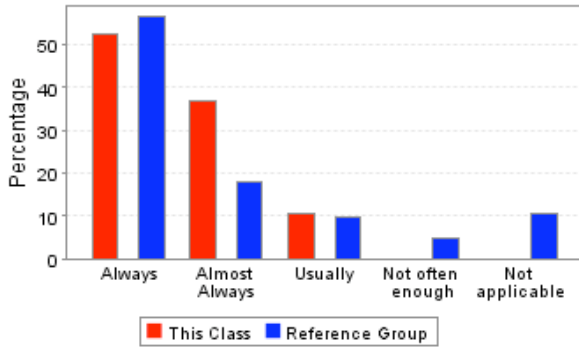
	This Course	Reference Group
Always	36.84%	54.74%
Almost Always	31.58%	23.71%
Usually	26.32%	13.36%
Sometimes	5.26%	6.03%
Rarely	0.00%	2.16%
Total Responses	19	232

4. Which best describes the instructor's attitude toward the subject matter?



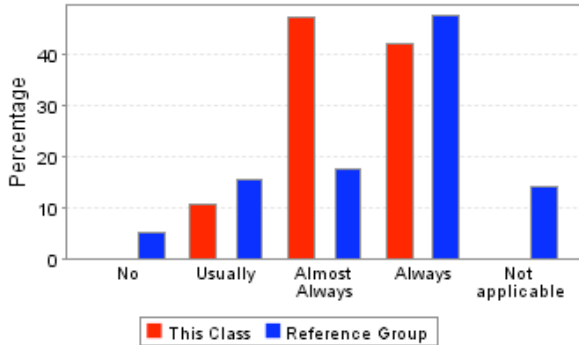
	This Course	Reference Group
Great enthusiasm	57.89%	63.79%
Enthusiastic	36.84%	30.60%
Seems to like subject	5.26%	3.88%
Indifferent	0.00%	1.72%
Doesn't like subject	0.00%	0.00%
Total Responses	19	232

5. Were the examinations appropriate for assessing mastery of the course material?



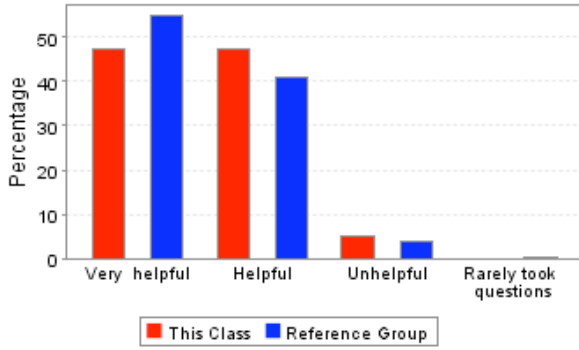
	This Course	Reference Group
Always	52.63%	56.47%
Almost Always	36.84%	18.10%
Usually	10.53%	9.91%
Not often enough	0.00%	4.74%
Not applicable	0.00%	10.78%
Total Responses	19	232

6. Did the instructor return assignments and examinations in a reasonable period of time?



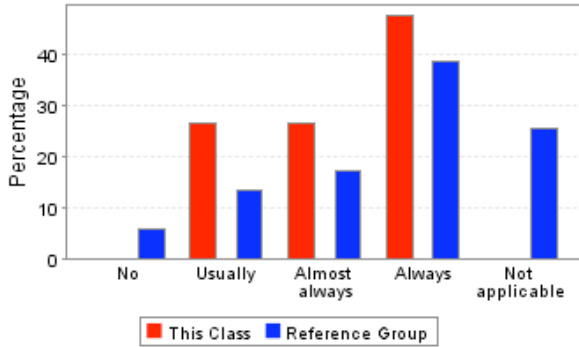
	This Course	Reference Group
No	0.00%	5.17%
Usually	10.53%	15.52%
Almost Always	47.37%	17.67%
Always	42.11%	47.41%
Not applicable	0.00%	14.22%
Total Responses	19	232

7. How helpful were the instructor's responses to students' questions in class?



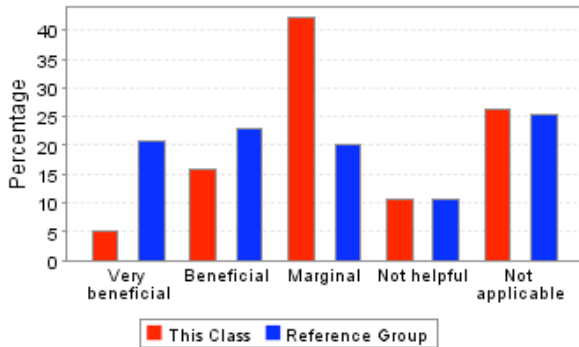
	This Course	Reference Group
Very helpful	47.37%	54.74%
Helpful	47.37%	40.95%
Unhelpful	5.26%	3.88%
Rarely took questions	0.00%	0.43%
Total Responses	19	232

8. If you needed assistance from the instructor outside of class, could you make satisfactory arrangements for a timely meeting?



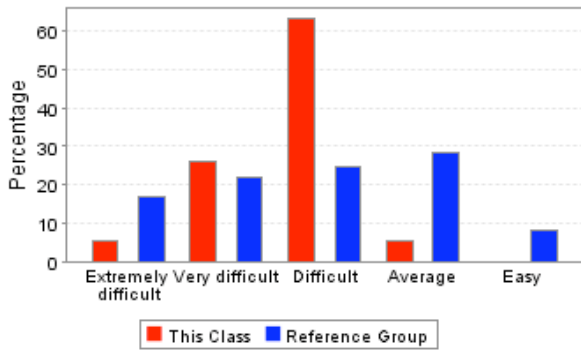
	This Course	Reference Group
No	0.00%	5.60%
Usually	26.32%	13.36%
Almost always	26.32%	17.24%
Always	47.37%	38.36%
Not applicable	0.00%	25.43%
Total Responses	19	232

9. How beneficial were the books required for this course?



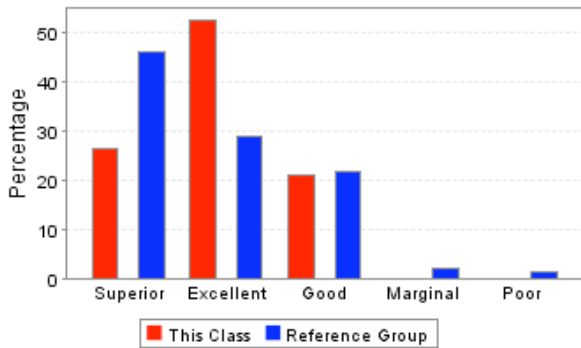
	This Course	Reference Group
Very beneficial	5.26%	20.69%
Beneficial	15.79%	22.84%
Marginal	42.11%	20.26%
Not helpful	10.53%	10.78%
Not applicable	26.32%	25.43%
Total Responses	19	232

10. How would you rate the difficulty level of this course, compared to other courses you have taken so far at Ole Miss?



	This Course	Reference Group
Extremely difficult	5.26%	16.79%
Very difficult	26.32%	22.14%
Difficult	63.16%	24.81%
Average	5.26%	28.24%
Easy	0.00%	8.02%
Total Responses	19	262

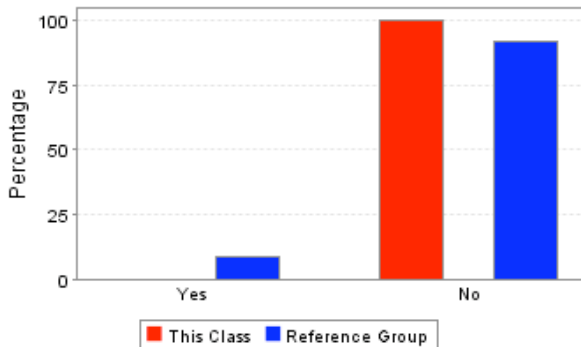
11. How would you rate the instructor's overall performance in this course?



	This Course	Reference Group
Superior	26.32%	46.18%
Excellent	52.63%	29.01%
Good	21.05%	21.76%
Marginal	0.00%	1.91%
Poor	0.00%	1.15%
Total Responses	19	262

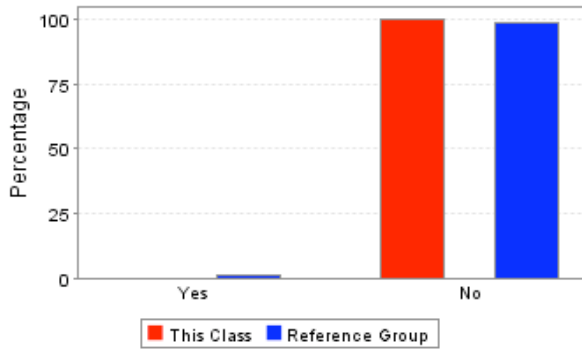
Detailed Questions

12. Too much time was spent on irrelevant topics or activities.



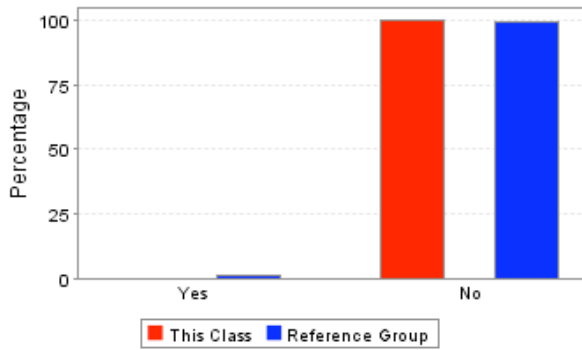
	This Course	Reference Group
Yes	0.00%	8.26%
No	100.00%	91.74%
Total Responses	15	218

13. The class was allowed to become unruly too often.



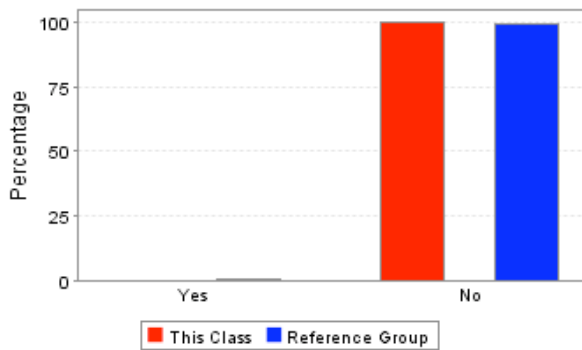
	This Course	Reference Group
Yes	0.00%	1.38%
No	100.00%	98.62%
Total Responses	15	218

14. Too many classes were canceled.



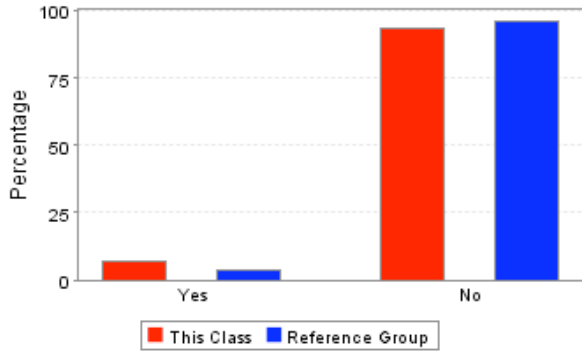
	This Course	Reference Group
Yes	0.00%	0.93%
No	100.00%	99.07%
Total Responses	15	216

15. Class was let out early too often.



	This Course	Reference Group
Yes	0.00%	0.46%
No	100.00%	99.54%
Total Responses	15	216

16. Class was kept over time too often.



Yes
No
Total
Responses

**This
Course**
6.67%
93.33%
15

**Reference
Group**
3.67%
96.33%
218