

## Teacher Evaluation Result - General and Detailed Questions

[Print this page](#) | [Close window](#)**CD 405 : Fluency and Voice Disorders , Section 1**

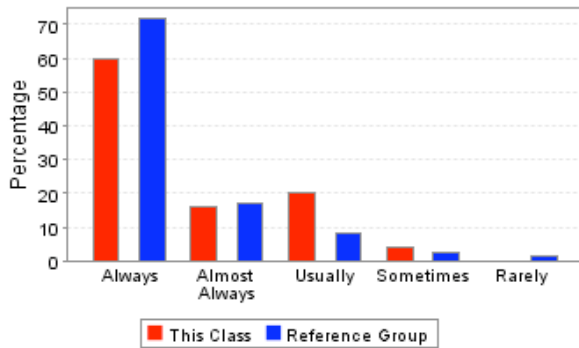
Course	CD 405, Section 1
Course Title	Fluency and Voice Disorders
Instructor	SNYDER GREGORY
Semester	Spring Semester 2006 - 2007
Department	COMMUNICATIVE DISORDERS
School	SCHOOL OF APPLIED SCIENCES
Reference Group	SCHOOL OF APPLIED SCIENCES Upper Division
Students Enrolled	53
Students Responding	50
Percent Responding	94.34%
Date of Report	Wed Jun 10 10:07:04 CDT 2009

**USER CAUTIONS :**

- These survey results should not be used for direct comparisons between, or rankings of, faculty. Many factors (including class size, class level, instructor gender, whether the class is required, and the students's class, expected grade, GPA, major, and gender) are known to bias survey responses. No attempt has been made to analyze for these factors.
- The enrollment for each course was captured at the time teacher evaluations were performed and may not match the final enrollment.
- The "Overall Rating" is taken as an average of the responses for question 11 (How would you rate the instructor's overall performance in this course?).

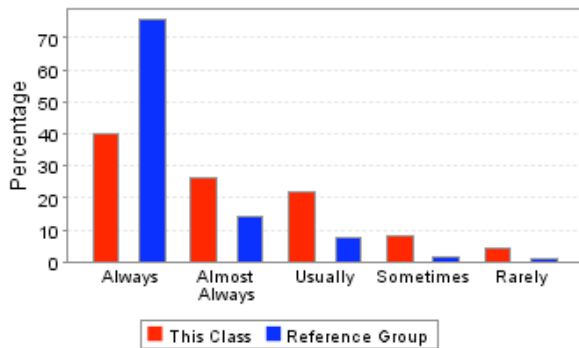
**Overall Rating :** ★★★★★

1. Was the instructor well organized and prepared for class sessions?



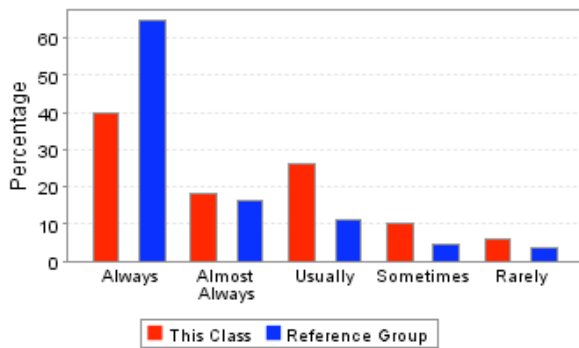
	<b>This Course</b>	<b>Reference Group</b>
Always	60.00%	71.58%
Almost Always	16.00%	16.83%
Usually	20.00%	7.99%
Sometimes	4.00%	2.34%
Rarely	0.00%	1.26%
<b>Total Responses</b>	<b>50</b>	<b>2139</b>

2. Did the instructor speak clearly and distinctly?



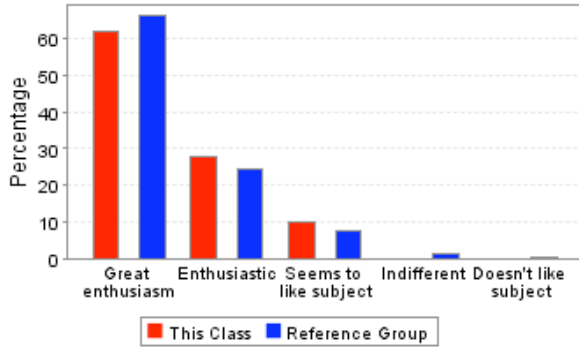
	<b>This Course</b>	<b>Reference Group</b>
Always	40.00%	75.55%
Almost Always	26.00%	14.07%
Usually	22.00%	7.43%
Sometimes	8.00%	1.78%
Rarely	4.00%	1.17%
<b>Total Responses</b>	<b>50</b>	<b>2139</b>

3. Did the instructor's classroom lectures and activities help you in learning the material?



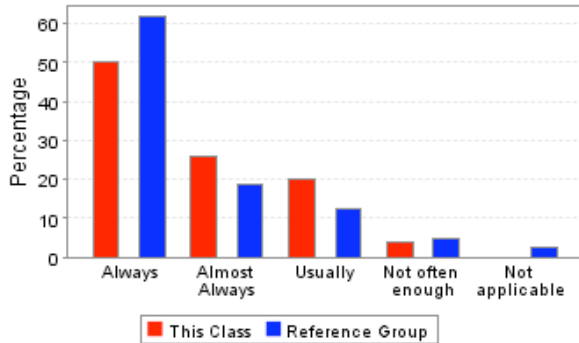
	<b>This Course</b>	<b>Reference Group</b>
Always	40.00%	64.56%
Almost Always	18.00%	16.18%
Usually	26.00%	10.94%
Sometimes	10.00%	4.68%
Rarely	6.00%	3.65%
<b>Total Responses</b>	<b>50</b>	<b>2139</b>

4. Which best describes the instructor's attitude toward the subject matter?



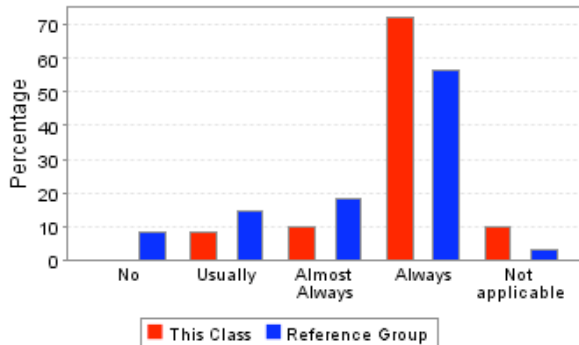
	<b>This Course</b>	<b>Reference Group</b>
Great enthusiasm	62.00%	66.19%
Enthusiastic	28.00%	24.23%
Seems to like subject	10.00%	7.68%
Indifferent	0.00%	1.53%
Doesn't like subject	0.00%	0.38%
<b>Total Responses</b>	<b>50</b>	<b>2357</b>

5. Were the examinations appropriate for assessing mastery of the course material?



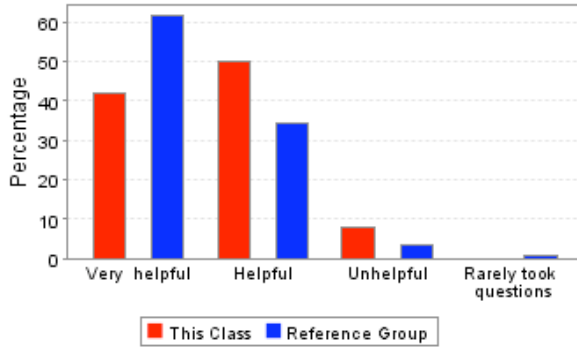
	<b>This Course</b>	<b>Reference Group</b>
Always	50.00%	61.65%
Almost Always	26.00%	18.54%
Usually	20.00%	12.56%
Not often enough	4.00%	4.88%
Not applicable	0.00%	2.38%
<b>Total Responses</b>	<b>50</b>	<b>2357</b>

6. Did the instructor return assignments and examinations in a reasonable period of time?



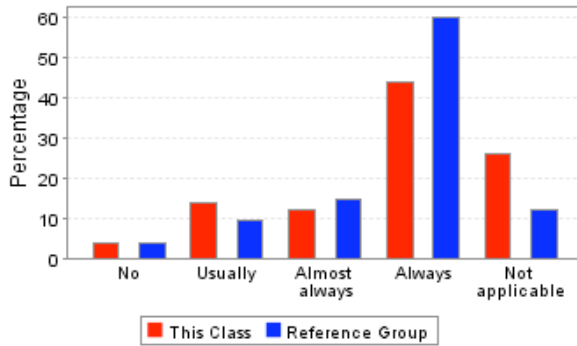
	<b>This Course</b>	<b>Reference Group</b>
No	0.00%	8.15%
Usually	8.00%	14.30%
Almost Always	10.00%	17.99%
Always	72.00%	56.30%
Not applicable	10.00%	3.27%
<b>Total Responses</b>	<b>50</b>	<b>2357</b>

7. How helpful were the instructor's responses to students' questions in class?



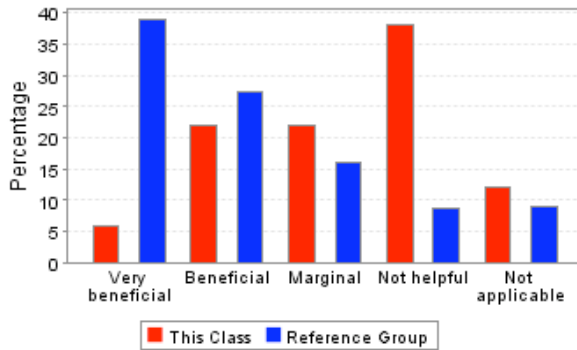
	<b>This Course</b>	<b>Reference Group</b>
Very helpful	42.00%	61.52%
Helpful	50.00%	34.32%
Unhelpful	8.00%	3.55%
Rarely took questions	0.00%	0.61%
<b>Total Responses</b>	<b>50</b>	<b>2139</b>

8. If you needed assistance from the instructor outside of class, could you make satisfactory arrangements for a timely meeting?



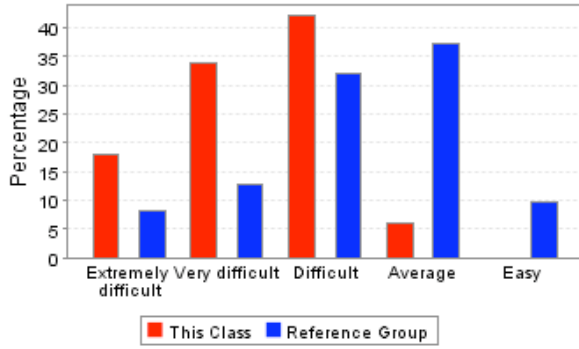
	<b>This Course</b>	<b>Reference Group</b>
No	4.00%	3.88%
Usually	14.00%	9.40%
Almost always	12.00%	14.54%
Always	44.00%	59.89%
Not applicable	26.00%	12.30%
<b>Total Responses</b>	<b>50</b>	<b>2139</b>

9. How beneficial were the books required for this course?



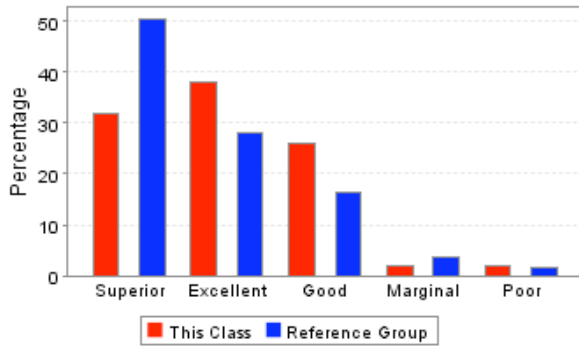
	<b>This Course</b>	<b>Reference Group</b>
Very beneficial	6.00%	38.82%
Beneficial	22.00%	27.28%
Marginal	22.00%	16.16%
Not helpful	38.00%	8.82%
Not applicable	12.00%	8.91%
<b>Total Responses</b>	<b>50</b>	<b>2357</b>

10. How would you rate the difficulty level of this course, compared to other courses you have taken so far at Ole Miss?



	<b>This Course</b>	<b>Reference Group</b>
Extremely difficult	18.00%	8.14%
Very difficult	34.00%	12.63%
Difficult	42.00%	32.12%
Average	6.00%	37.35%
Easy	0.00%	9.76%
<b>Total Responses</b>	<b>50</b>	<b>2581</b>

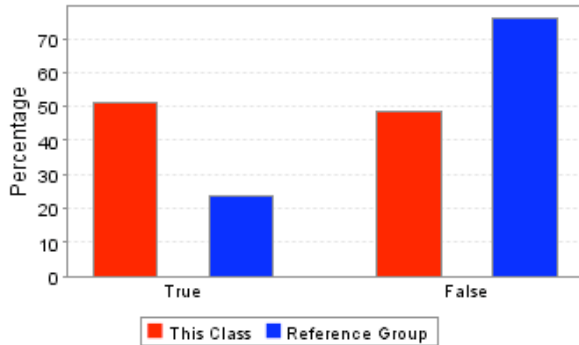
11. How would you rate the instructor's overall performance in this course?



	<b>This Course</b>	<b>Reference Group</b>
Superior	32.00%	50.52%
Excellent	38.00%	28.13%
Good	26.00%	16.23%
Marginal	2.00%	3.53%
Poor	2.00%	1.59%
<b>Total Responses</b>	<b>50</b>	<b>2581</b>

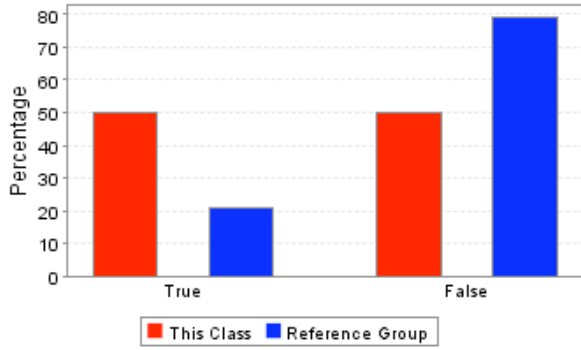
## Detailed Questions

12. The content or quality of required books or other required readings was inadequate.



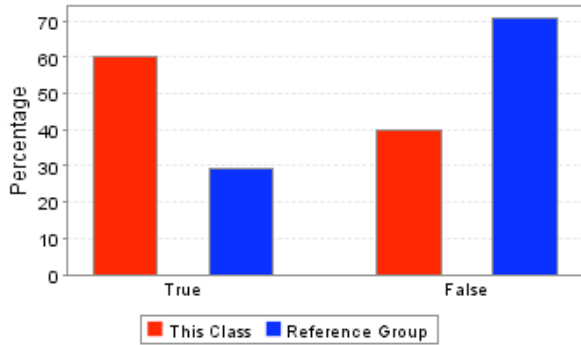
	<b>This Course</b>	<b>Reference Group</b>
True	51.22%	23.89%
False	48.78%	76.11%
<b>Total Responses</b>	<b>41</b>	<b>1716</b>

13. Some required books or other required readings seemed to be irrelevant to the course goals.



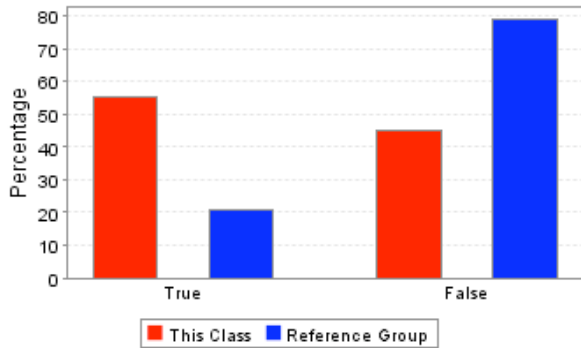
	<b>This Course</b>	<b>Reference Group</b>
True	50.00%	20.75%
False	50.00%	79.25%
<b>Total Responses</b>	<b>40</b>	<b>1706</b>

14. Required books or other required readings were too expensive to be a good value.



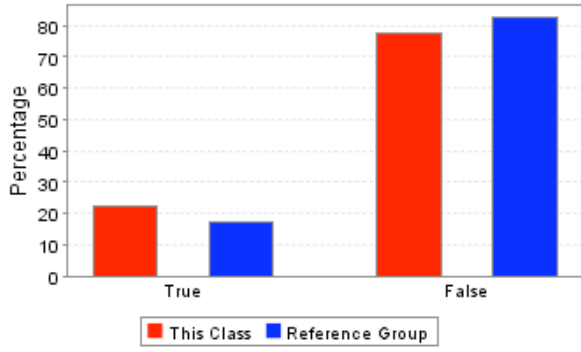
	<b>This Course</b>	<b>Reference Group</b>
True	60.00%	29.14%
False	40.00%	70.86%
<b>Total Responses</b>	<b>40</b>	<b>1709</b>

15. Books or other readings that were recommended (but not required) were of little value in meeting course goals.



	<b>This Course</b>	<b>Reference Group</b>
True	55.00%	20.98%
False	45.00%	79.02%
<b>Total Responses</b>	<b>40</b>	<b>1697</b>

16. The amount of reading required for this course was excessive.



	<b>This Course</b>	<b>Reference Group</b>
True	22.50%	17.36%
False	77.50%	82.64%
<b>Total Responses</b>	<b>40</b>	<b>1711</b>