

Teacher Evaluation Result - General and Detailed Questions

[Print this page](#) | [Close window](#)**CD 521 : Disorders of Fluency , Section 1**

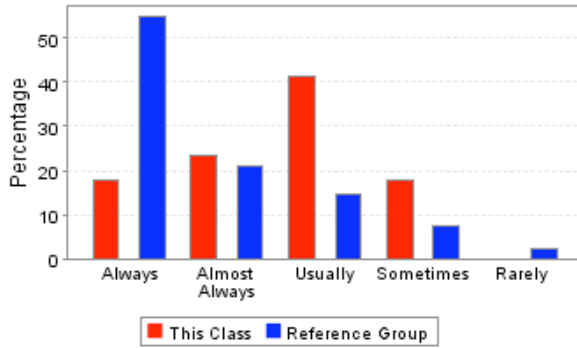
Course	CD 521, Section 1
Course Title	Disorders of Fluency
Instructor	SNYDER GREGORY
Semester	Spring Semester 2006 - 2007
Department	COMMUNICATIVE DISORDERS
School	SCHOOL OF APPLIED SCIENCES
Reference Group	SCHOOL OF APPLIED SCIENCES Graduate Division
Students Enrolled	20
Students Responding	17
Percent Responding	85.00%
Date of Report	Wed Jun 10 10:46:08 CDT 2009

USER CAUTIONS :

- These survey results should not be used for direct comparisons between, or rankings of, faculty. Many factors (including class size, class level, instructor gender, whether the class is required, and the students's class, expected grade, GPA, major, and gender) are known to bias survey responses. No attempt has been made to analyze for these factors.
- The enrollment for each course was captured at the time teacher evaluations were performed and may not match the final enrollment.
- The "Overall Rating" is taken as an average of the responses for question 11 (How would you rate the instructor's overall performance in this course?).

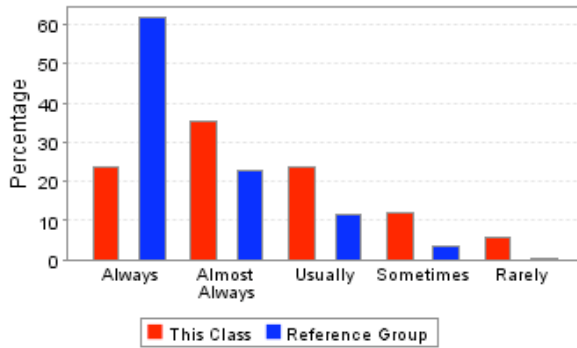
Overall Rating : ★★☆☆

1. Was the instructor well organized and prepared for class sessions?



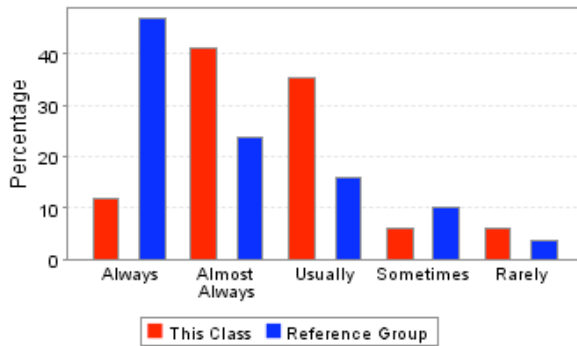
	This Course	Reference Group
Always	17.65%	54.74%
Almost Always	23.53%	21.05%
Usually	41.18%	14.74%
Sometimes	17.65%	7.37%
Rarely	0.00%	2.11%
Total Responses	17	190

2. Did the instructor speak clearly and distinctly?



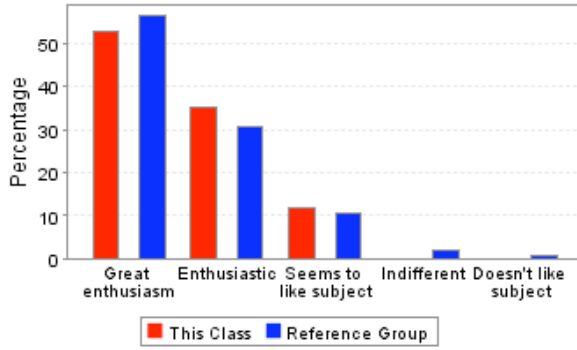
	This Course	Reference Group
Always	23.53%	61.58%
Almost Always	35.29%	22.63%
Usually	23.53%	11.58%
Sometimes	11.76%	3.68%
Rarely	5.88%	0.53%
Total Responses	17	190

3. Did the instructor's classroom lectures and activities help you in learning the material?



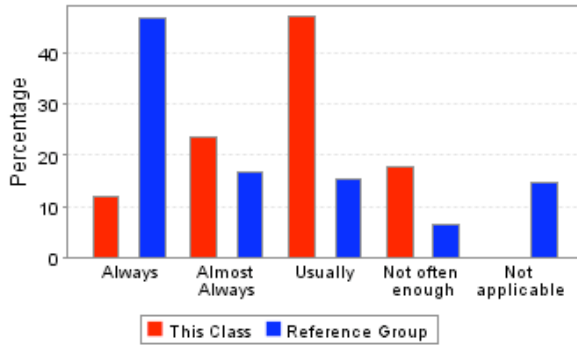
	This Course	Reference Group
Always	11.76%	46.84%
Almost Always	41.18%	23.68%
Usually	35.29%	15.79%
Sometimes	5.88%	10.00%
Rarely	5.88%	3.68%
Total Responses	17	190

4. Which best describes the instructor's attitude toward the subject matter?



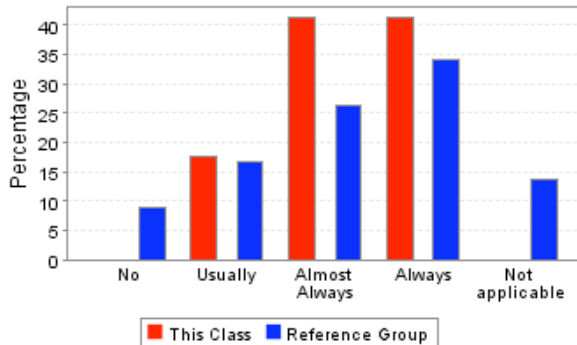
	This Course	Reference Group
Great enthusiasm	52.94%	56.32%
Enthusiastic	35.29%	30.53%
Seems to like subject	11.76%	10.53%
Indifferent	0.00%	2.11%
Doesn't like subject	0.00%	0.53%
Total Responses	17	190

5. Were the examinations appropriate for assessing mastery of the course material?



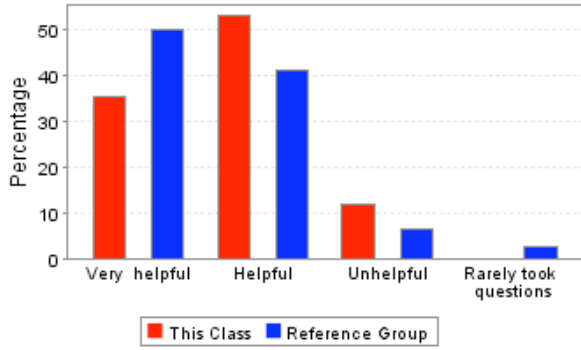
	This Course	Reference Group
Always	11.76%	46.84%
Almost Always	23.53%	16.84%
Usually	47.06%	15.26%
Not often enough	17.65%	6.32%
Not applicable	0.00%	14.74%
Total Responses	17	190

6. Did the instructor return assignments and examinations in a reasonable period of time?



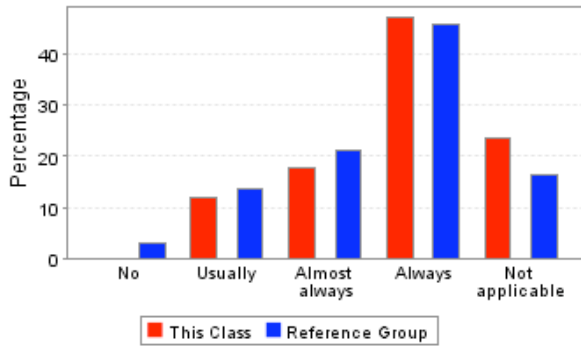
	This Course	Reference Group
No	0.00%	8.95%
Usually	17.65%	16.84%
Almost Always	41.18%	26.32%
Always	41.18%	34.21%
Not applicable	0.00%	13.68%
Total Responses	17	190

7. How helpful were the instructor's responses to students' questions in class?



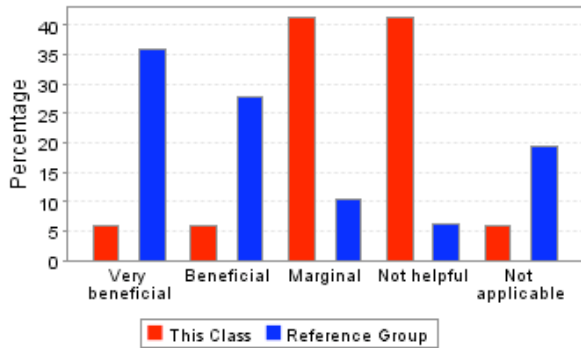
	This Course	Reference Group
Very helpful	35.29%	50.00%
Helpful	52.94%	41.05%
Unhelpful	11.76%	6.32%
Rarely took questions	0.00%	2.63%
Total Responses	17	190

8. If you needed assistance from the instructor outside of class, could you make satisfactory arrangements for a timely meeting?



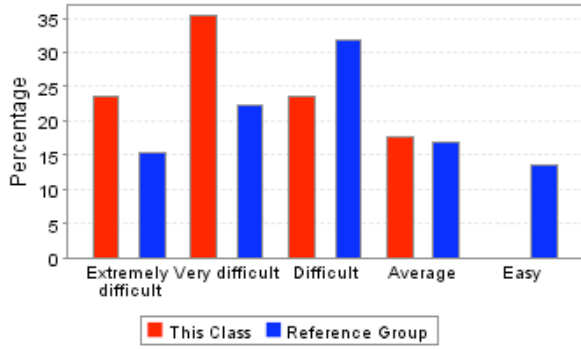
	This Course	Reference Group
No	0.00%	3.16%
Usually	11.76%	13.68%
Almost always	17.65%	21.05%
Always	47.06%	45.79%
Not applicable	23.53%	16.32%
Total Responses	17	190

9. How beneficial were the books required for this course?



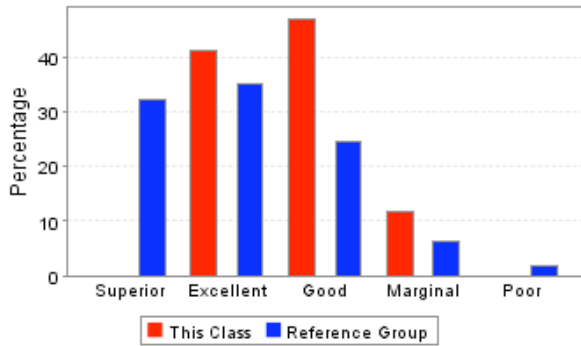
	This Course	Reference Group
Very beneficial	5.88%	35.79%
Beneficial	5.88%	27.89%
Marginal	41.18%	10.53%
Not helpful	41.18%	6.32%
Not applicable	5.88%	19.47%
Total Responses	17	190

10. How would you rate the difficulty level of this course, compared to other courses you have taken so far at Ole Miss?



	This Course	Reference Group
Extremely difficult	23.53%	15.45%
Very difficult	35.29%	22.27%
Difficult	23.53%	31.82%
Average	17.65%	16.82%
Easy	0.00%	13.64%
Total Responses	17	220

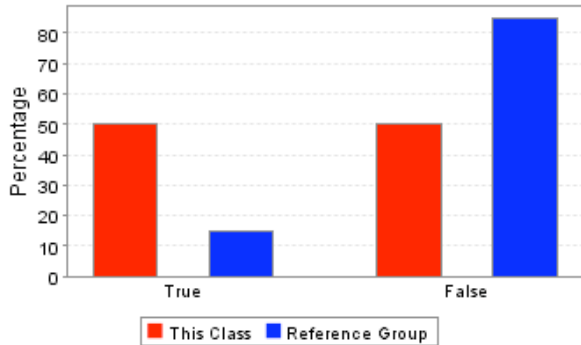
11. How would you rate the instructor's overall performance in this course?



	This Course	Reference Group
Superior	0.00%	32.27%
Excellent	41.18%	35.00%
Good	47.06%	24.55%
Marginal	11.76%	6.36%
Poor	0.00%	1.82%
Total Responses	17	220

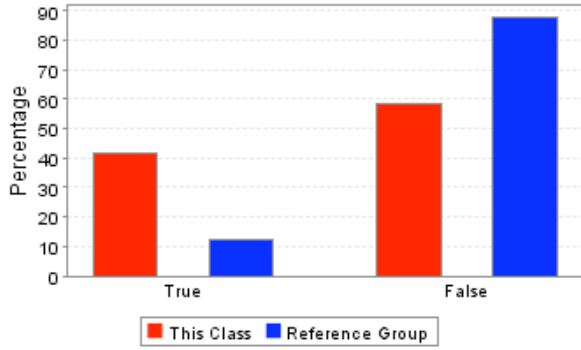
Detailed Questions

12. The content or quality of required books or other required readings was inadequate.



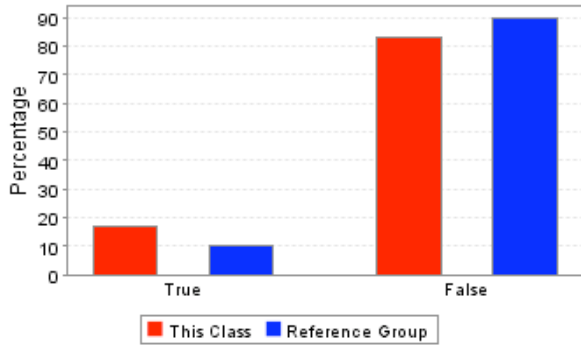
	This Course	Reference Group
True	50.00%	15.00%
False	50.00%	85.00%
Total Responses	12	140

13. Some required books or other required readings seemed to be irrelevant to the course goals.



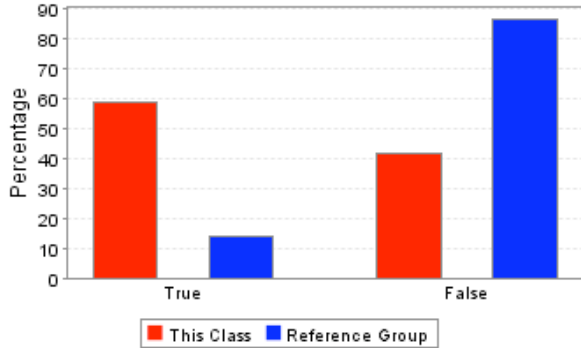
	This Course	Reference Group
True	41.67%	12.14%
False	58.33%	87.86%
Total Responses	12	140

14. Required books or other required readings were too expensive to be a good value.



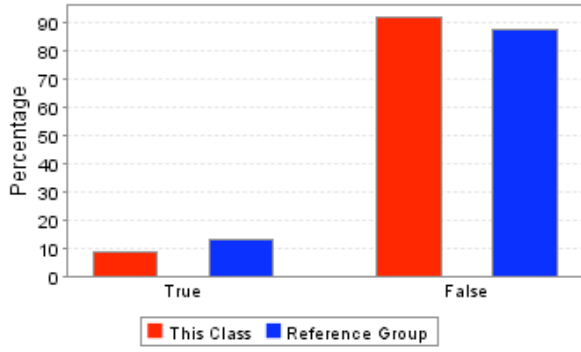
	This Course	Reference Group
True	16.67%	10.00%
False	83.33%	90.00%
Total Responses	12	140

15. Books or other readings that were recommended (but not required) were of little value in meeting course goals.



	This Course	Reference Group
True	58.33%	13.67%
False	41.67%	86.33%
Total Responses	12	139

16. The amount of reading required for this course was excessive.



	This Course	Reference Group
True	8.33%	12.95%
False	91.67%	87.05%
Total Responses	12	139