

## Teacher Evaluation Result - General and Detailed Questions

[Print this page](#) | [Close window](#)**CD 613 : Rsch Design & Anal , Section 1**

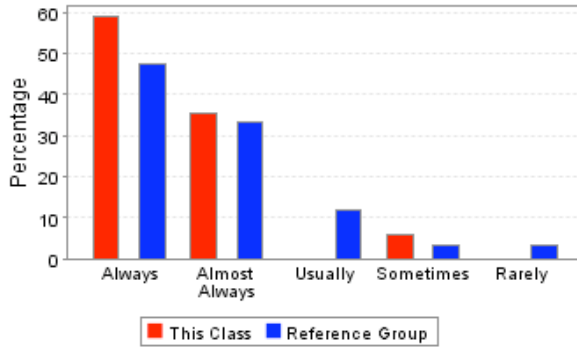
Course	CD 613, Section 1
Course Title	Rsch Design & Anal
Instructor	SNYDER GREGORY
Semester	Fall Semester 2007 - 2008
Department	COMMUNICATIVE DISORDERS
School	SCHOOL OF APPLIED SCIENCES
Reference Group	SCHOOL OF APPLIED SCIENCES Graduate Division
Students Enrolled	18
Students Responding	17
Percent Responding	94.44%
Date of Report	Wed Jun 10 10:24:23 CDT 2009

**USER CAUTIONS :**

- These survey results should not be used for direct comparisons between, or rankings of, faculty. Many factors (including class size, class level, instructor gender, whether the class is required, and the students's class, expected grade, GPA, major, and gender) are known to bias survey responses. No attempt has been made to analyze for these factors.
- The enrollment for each course was captured at the time teacher evaluations were performed and may not match the final enrollment.
- The "Overall Rating" is taken as an average of the responses for question 11 (How would you rate the instructor's overall performance in this course?).

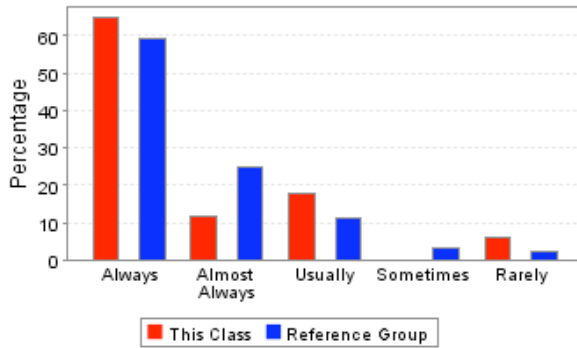
**Overall Rating :** ★★★★★

1. Was the instructor well organized and prepared for class sessions?



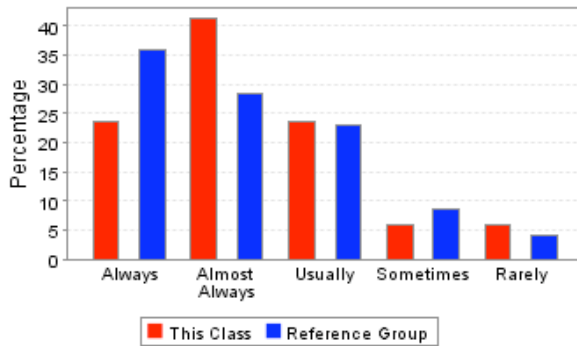
	<b>This Course</b>	<b>Reference Group</b>
Always	58.82%	47.50%
Almost Always	35.29%	33.50%
Usually	0.00%	12.00%
Sometimes	5.88%	3.50%
Rarely	0.00%	3.50%
<b>Total Responses</b>	<b>17</b>	<b>200</b>

2. Did the instructor speak clearly and distinctly?



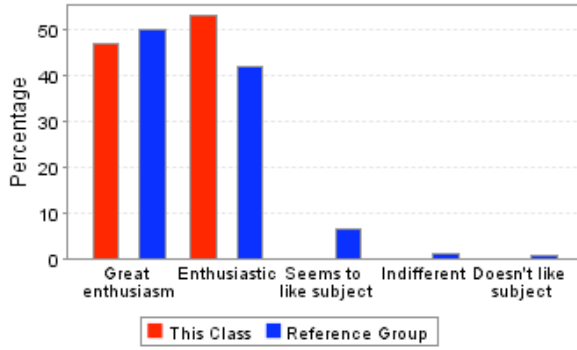
	<b>This Course</b>	<b>Reference Group</b>
Always	64.71%	59.00%
Almost Always	11.76%	25.00%
Usually	17.65%	11.00%
Sometimes	0.00%	3.00%
Rarely	5.88%	2.00%
<b>Total Responses</b>	<b>17</b>	<b>200</b>

3. Did the instructor's classroom lectures and activities help you in learning the material?



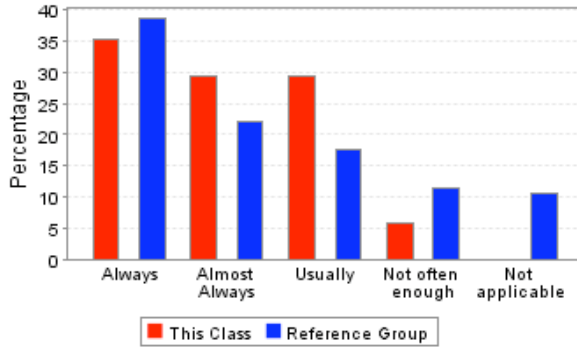
	<b>This Course</b>	<b>Reference Group</b>
Always	23.53%	36.00%
Almost Always	41.18%	28.50%
Usually	23.53%	23.00%
Sometimes	5.88%	8.50%
Rarely	5.88%	4.00%
<b>Total Responses</b>	<b>17</b>	<b>200</b>

4. Which best describes the instructor's attitude toward the subject matter?



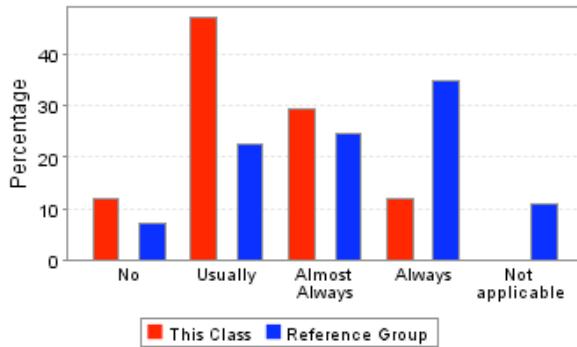
	<b>This Course</b>	<b>Reference Group</b>
Great enthusiasm	47.06%	50.00%
Enthusiastic	52.94%	42.00%
Seems to like subject	0.00%	6.50%
Indifferent	0.00%	1.00%
Doesn't like subject	0.00%	0.50%
<b>Total Responses</b>	<b>17</b>	<b>200</b>

5. Were the examinations appropriate for assessing mastery of the course material?



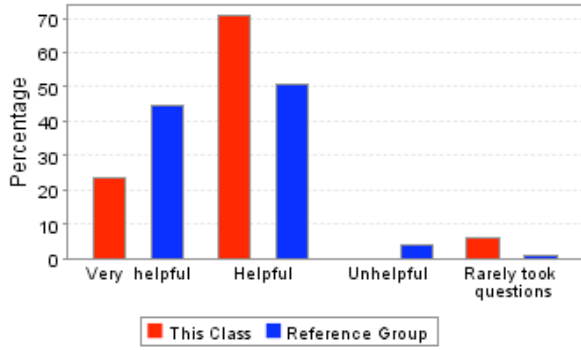
	<b>This Course</b>	<b>Reference Group</b>
Always	35.29%	38.50%
Almost Always	29.41%	22.00%
Usually	29.41%	17.50%
Not often enough	5.88%	11.50%
Not applicable	0.00%	10.50%
<b>Total Responses</b>	<b>17</b>	<b>200</b>

6. Did the instructor return assignments and examinations in a reasonable period of time?



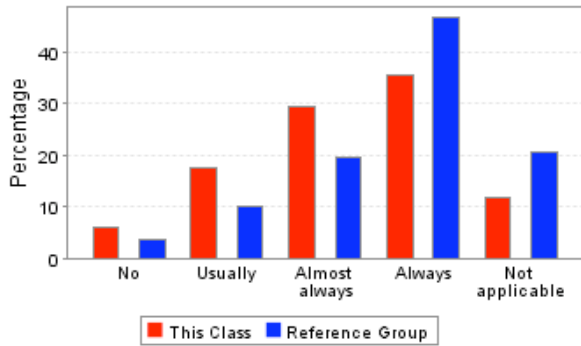
	<b>This Course</b>	<b>Reference Group</b>
No	11.76%	7.00%
Usually	47.06%	22.50%
Almost Always	29.41%	24.50%
Always	11.76%	35.00%
Not applicable	0.00%	11.00%
<b>Total Responses</b>	<b>17</b>	<b>200</b>

7. How helpful were the instructor's responses to students' questions in class?



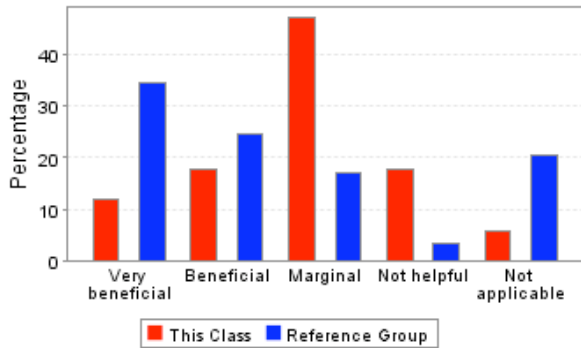
	<b>This Course</b>	<b>Reference Group</b>
Very helpful	23.53%	44.50%
Helpful	70.59%	50.50%
Unhelpful	0.00%	4.00%
Rarely took questions	5.88%	1.00%
<b>Total Responses</b>	<b>17</b>	<b>200</b>

8. If you needed assistance from the instructor outside of class, could you make satisfactory arrangements for a timely meeting?



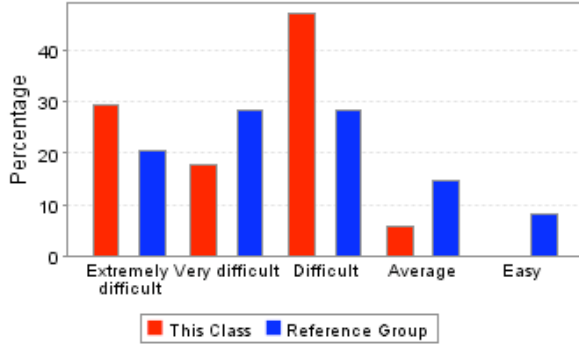
	<b>This Course</b>	<b>Reference Group</b>
No	5.88%	3.50%
Usually	17.65%	10.00%
Almost always	29.41%	19.50%
Always	35.29%	46.50%
Not applicable	11.76%	20.50%
<b>Total Responses</b>	<b>17</b>	<b>200</b>

9. How beneficial were the books required for this course?



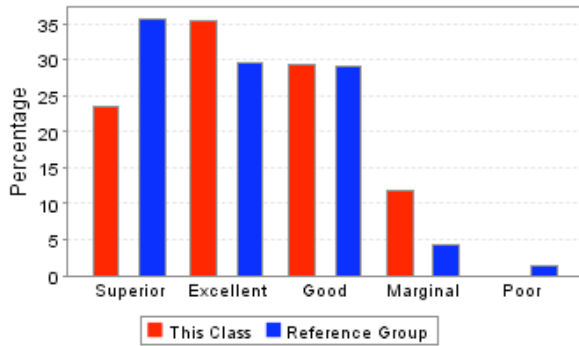
	<b>This Course</b>	<b>Reference Group</b>
Very beneficial	11.76%	34.50%
Beneficial	17.65%	24.50%
Marginal	47.06%	17.00%
Not helpful	17.65%	3.50%
Not applicable	5.88%	20.50%
<b>Total Responses</b>	<b>17</b>	<b>200</b>

10. How would you rate the difficulty level of this course, compared to other courses you have taken so far at Ole Miss?



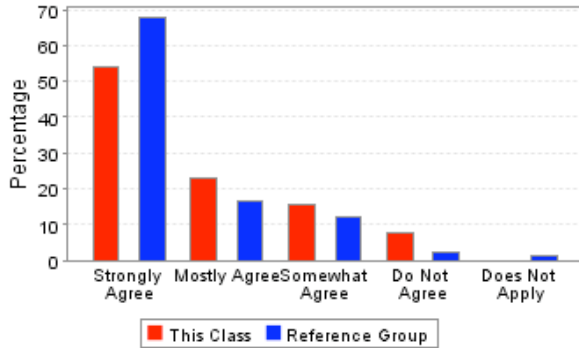
	<b>This Course</b>	<b>Reference Group</b>
Extremely difficult	29.41%	20.43%
Very difficult	17.65%	28.26%
Difficult	47.06%	28.26%
Average	5.88%	14.78%
Easy	0.00%	8.26%
<b>Total Responses</b>	<b>17</b>	<b>230</b>

11. How would you rate the instructor's overall performance in this course?



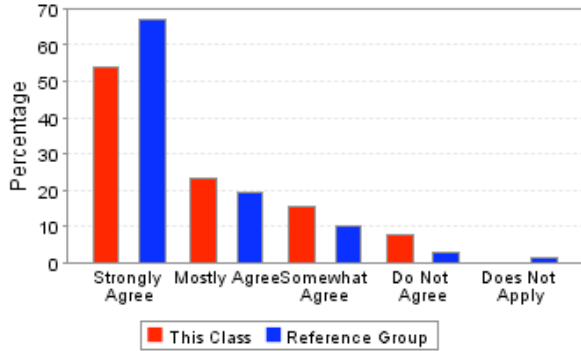
	<b>This Course</b>	<b>Reference Group</b>
Superior	23.53%	35.65%
Excellent	35.29%	29.57%
Good	29.41%	29.13%
Marginal	11.76%	4.35%
Poor	0.00%	1.30%
<b>Total Responses</b>	<b>17</b>	<b>230</b>

12. The students and the instructor treated each other with dignity and respect.



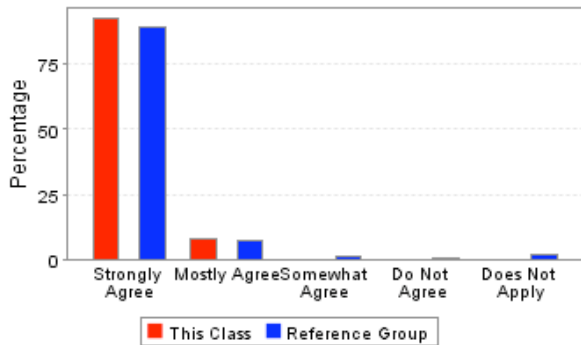
	<b>This Course</b>	<b>Reference Group</b>
Strongly Agree	53.85%	67.63%
Mostly Agree	23.08%	16.76%
Somewhat Agree	15.38%	12.14%
Do Not Agree	7.69%	2.31%
Does Not Apply	0.00%	1.16%
<b>Total Responses</b>	<b>13</b>	<b>173</b>

13. The instructor(s) displayed personal and professional integrity at all times.



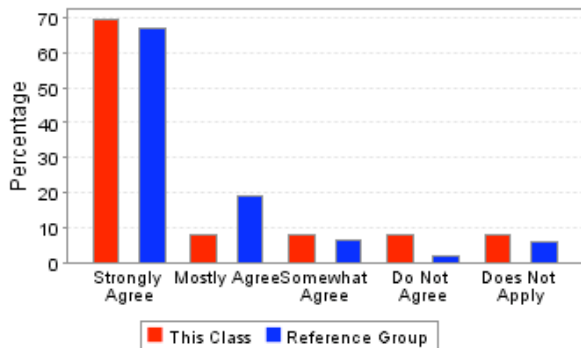
	<b>This Course</b>	<b>Reference Group</b>
Strongly Agree	53.85%	66.86%
Mostly Agree	23.08%	19.19%
Somewhat Agree	15.38%	9.88%
Do Not Agree	7.69%	2.91%
Does Not Apply	0.00%	1.16%
<b>Total Responses</b>	<b>13</b>	<b>172</b>

14. All students, including myself, practiced academic honesty at all times.



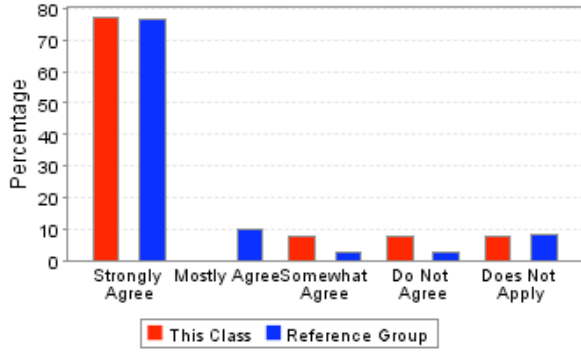
	<b>This Course</b>	<b>Reference Group</b>
Strongly Agree	92.31%	89.47%
Mostly Agree	7.69%	7.02%
Somewhat Agree	0.00%	1.17%
Do Not Agree	0.00%	0.58%
Does Not Apply	0.00%	1.75%
<b>Total Responses</b>	<b>13</b>	<b>171</b>

15. The students were allowed to express different points of view (e.g., exercise academic freedom) without fear of recourse from the instructor.



	<b>This Course</b>	<b>Reference Group</b>
Strongly Agree	69.23%	66.86%
Mostly Agree	7.69%	19.19%
Somewhat Agree	7.69%	6.40%
Do Not Agree	7.69%	1.74%
Does Not Apply	7.69%	5.81%
<b>Total Responses</b>	<b>13</b>	<b>172</b>

16. The ideals of the University Creed were upheld.



	<b>This Course</b>	<b>Reference Group</b>
Strongly Agree	76.92%	76.30%
Mostly Agree	0.00%	9.83%
Somewhat Agree	7.69%	2.89%
Do Not Agree	7.69%	2.89%
Does Not Apply	7.69%	8.09%
<b>Total Responses</b>	<b>13</b>	<b>173</b>