

Teacher Evaluation Result - General and Detailed Questions

[Print this page](#) | [Close window](#)**CD 405 : Fluency and Voice Disorders , Section 1**

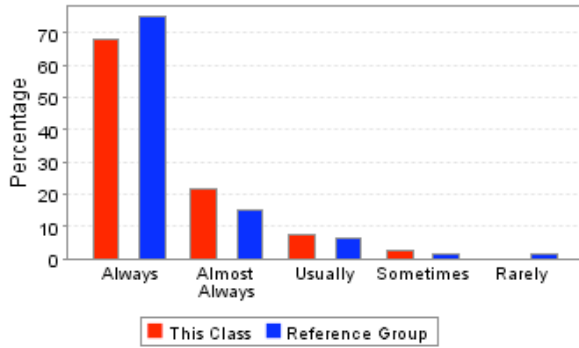
Course	CD 405, Section 1
Course Title	Fluency and Voice Disorders
Instructor	SNYDER GREGORY
Semester	Spring Semester 2007 - 2008
Department	COMMUNICATIVE DISORDERS
School	SCHOOL OF APPLIED SCIENCES
Reference Group	SCHOOL OF APPLIED SCIENCES Upper Division
Students Enrolled	46
Students Responding	41
Percent Responding	89.13%
Date of Report	Wed Jun 10 10:25:25 CDT 2009

USER CAUTIONS :

- These survey results should not be used for direct comparisons between, or rankings of, faculty. Many factors (including class size, class level, instructor gender, whether the class is required, and the students's class, expected grade, GPA, major, and gender) are known to bias survey responses. No attempt has been made to analyze for these factors.
- The enrollment for each course was captured at the time teacher evaluations were performed and may not match the final enrollment.
- The "Overall Rating" is taken as an average of the responses for question 11 (How would you rate the instructor's overall performance in this course?).

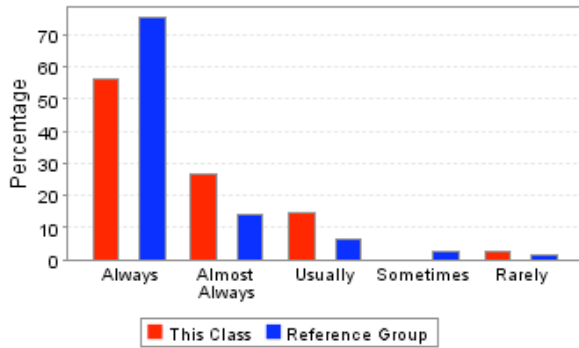
Overall Rating : ★★★★★

1. Was the instructor well organized and prepared for class sessions?



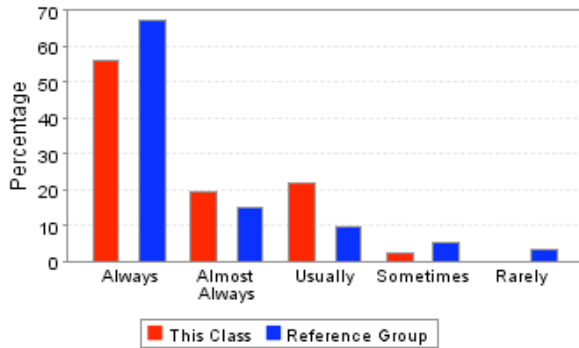
	This Course	Reference Group
Always	68.29%	74.94%
Almost Always	21.95%	15.35%
Usually	7.32%	6.68%
Sometimes	2.44%	1.61%
Rarely	0.00%	1.42%
Total Responses	41	2111

2. Did the instructor speak clearly and distinctly?



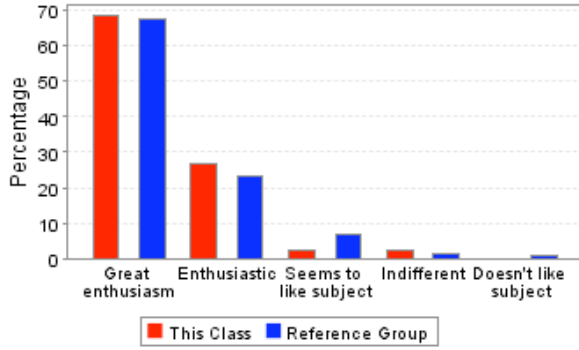
	This Course	Reference Group
Always	56.10%	75.23%
Almost Always	26.83%	14.26%
Usually	14.63%	6.63%
Sometimes	0.00%	2.65%
Rarely	2.44%	1.23%
Total Responses	41	2111

3. Did the instructor's classroom lectures and activities help you in learning the material?



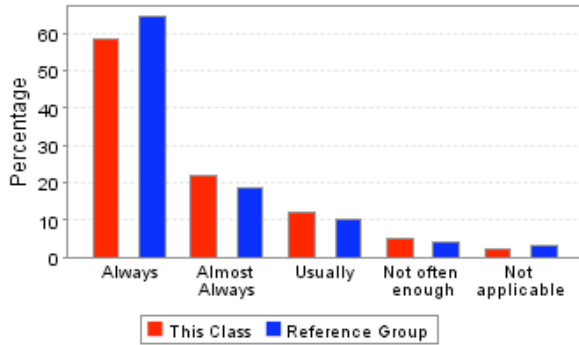
	This Course	Reference Group
Always	56.10%	67.12%
Almost Always	19.51%	14.78%
Usually	21.95%	9.52%
Sometimes	2.44%	5.26%
Rarely	0.00%	3.32%
Total Responses	41	2111

4. Which best describes the instructor's attitude toward the subject matter?



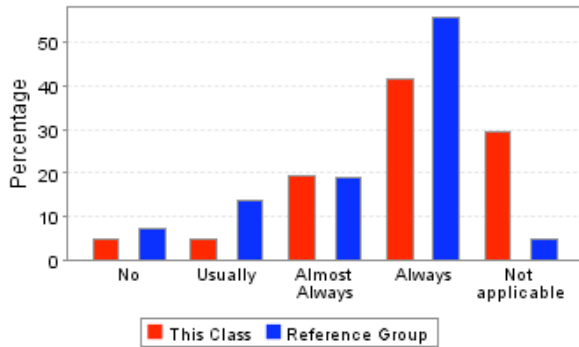
	This Course	Reference Group
Great enthusiasm	68.29%	67.63%
Enthusiastic	26.83%	23.41%
Seems to like subject	2.44%	6.72%
Indifferent	2.44%	1.35%
Doesn't like subject	0.00%	0.89%
Total Responses	41	2144

5. Were the examinations appropriate for assessing mastery of the course material?



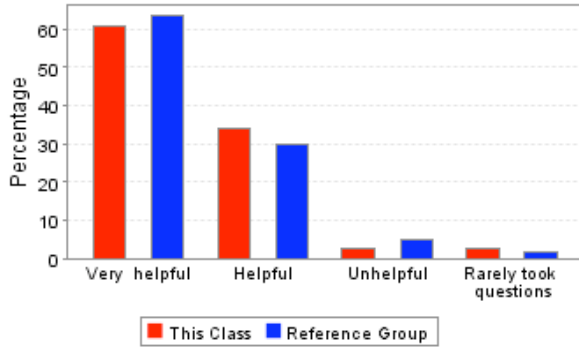
	This Course	Reference Group
Always	58.54%	64.46%
Almost Always	21.95%	18.42%
Usually	12.20%	10.12%
Not often enough	4.88%	4.06%
Not applicable	2.44%	2.94%
Total Responses	41	2144

6. Did the instructor return assignments and examinations in a reasonable period of time?



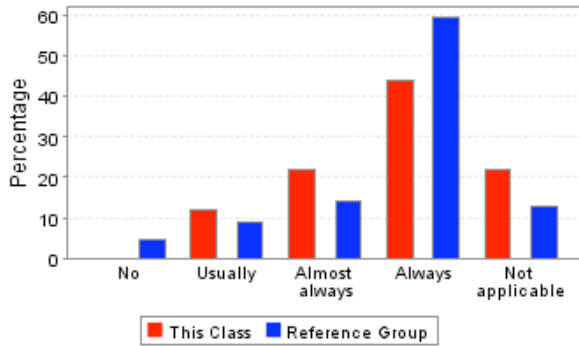
	This Course	Reference Group
No	4.88%	7.32%
Usually	4.88%	13.48%
Almost Always	19.51%	18.98%
Always	41.46%	55.60%
Not applicable	29.27%	4.62%
Total Responses	41	2144

7. How helpful were the instructor's responses to students' questions in class?



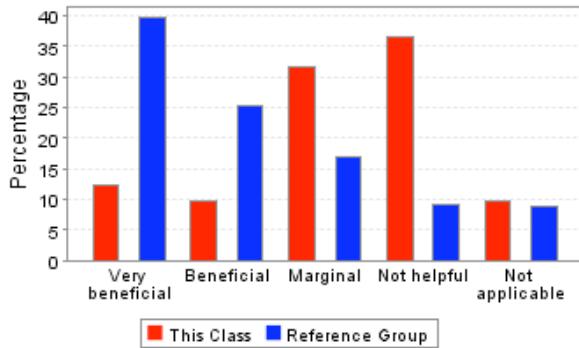
	This Course	Reference Group
Very helpful	60.98%	63.38%
Helpful	34.15%	30.03%
Unhelpful	2.44%	4.88%
Rarely took questions	2.44%	1.71%
Total Responses	41	2111

8. If you needed assistance from the instructor outside of class, could you make satisfactory arrangements for a timely meeting?



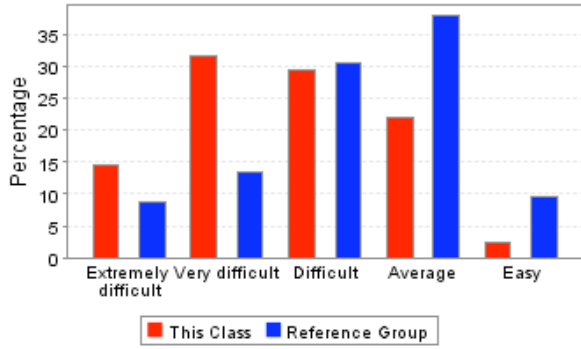
	This Course	Reference Group
No	0.00%	4.50%
Usually	12.20%	9.14%
Almost always	21.95%	14.21%
Always	43.90%	59.36%
Not applicable	21.95%	12.79%
Total Responses	41	2111

9. How beneficial were the books required for this course?



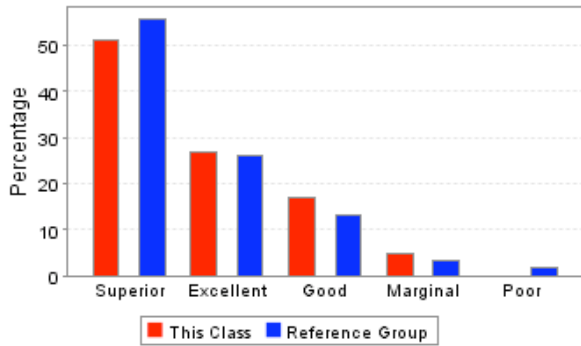
	This Course	Reference Group
Very beneficial	12.20%	39.60%
Beneficial	9.76%	25.37%
Marginal	31.71%	16.98%
Not helpful	36.59%	9.14%
Not applicable	9.76%	8.91%
Total Responses	41	2144

10. How would you rate the difficulty level of this course, compared to other courses you have taken so far at Ole Miss?



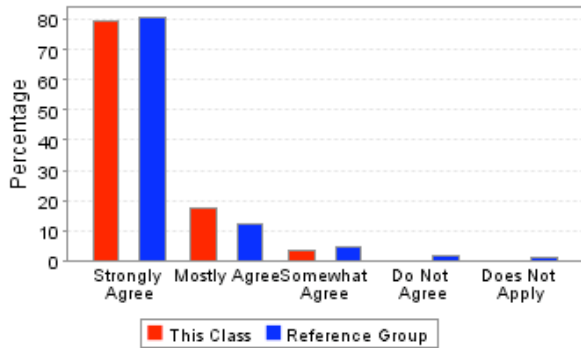
	This Course	Reference Group
Extremely difficult	14.63%	8.63%
Very difficult	31.71%	13.53%
Difficult	29.27%	30.53%
Average	21.95%	37.84%
Easy	2.44%	9.47%
Total Responses	41	2365

11. How would you rate the instructor's overall performance in this course?



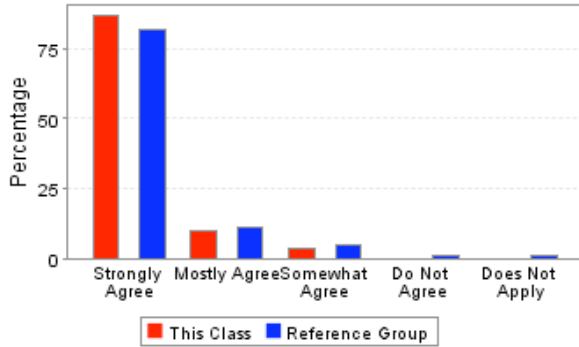
	This Course	Reference Group
Superior	51.22%	55.86%
Excellent	26.83%	26.05%
Good	17.07%	13.23%
Marginal	4.88%	3.26%
Poor	0.00%	1.61%
Total Responses	41	2365

12. The students and the instructor treated each other with dignity and respect.



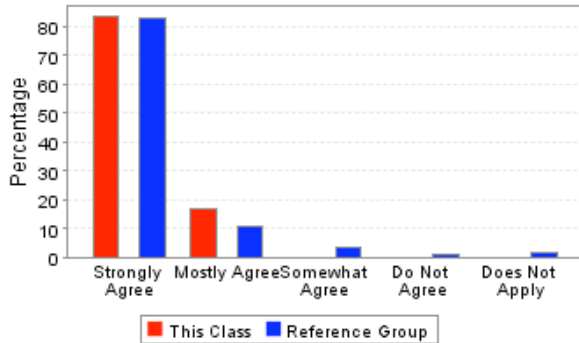
	This Course	Reference Group
Strongly Agree	79.31%	80.48%
Mostly Agree	17.24%	12.43%
Somewhat Agree	3.45%	4.54%
Do Not Agree	0.00%	1.59%
Does Not Apply	0.00%	0.96%
Total Responses	29	1762

13. The instructor(s) displayed personal and professional integrity at all times.



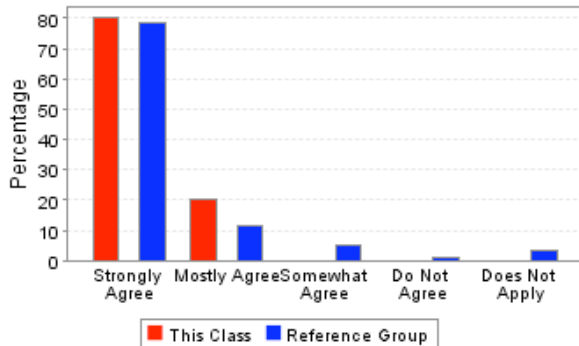
	This Course	Reference Group
Strongly Agree	86.67%	81.82%
Mostly Agree	10.00%	11.04%
Somewhat Agree	3.33%	4.70%
Do Not Agree	0.00%	1.30%
Does Not Apply	0.00%	1.13%
Total Responses	30	1766

14. All students, including myself, practiced academic honesty at all times.



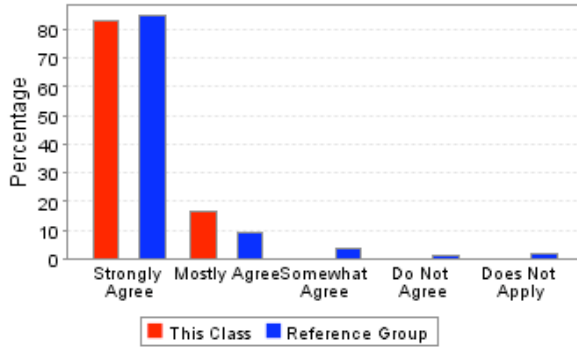
	This Course	Reference Group
Strongly Agree	83.33%	83.01%
Mostly Agree	16.67%	10.62%
Somewhat Agree	0.00%	3.58%
Do Not Agree	0.00%	0.97%
Does Not Apply	0.00%	1.82%
Total Responses	30	1760

15. The students were allowed to express different points of view (e.g., exercise academic freedom) without fear of recourse from the instructor.



	This Course	Reference Group
Strongly Agree	80.00%	78.75%
Mostly Agree	20.00%	11.39%
Somewhat Agree	0.00%	5.04%
Do Not Agree	0.00%	1.30%
Does Not Apply	0.00%	3.51%
Total Responses	30	1765

16. The ideals of the University Creed were upheld.



	This Course	Reference Group
Strongly Agree	83.33%	84.68%
Mostly Agree	16.67%	9.36%
Somewhat Agree	0.00%	3.29%
Do Not Agree	0.00%	1.02%
Does Not Apply	0.00%	1.65%
Total Responses	30	1762