

Teacher Evaluation Result - General and Detailed Questions

[Print this page](#) | [Close window](#)**CSD 513 : Speech Science , Section 1**

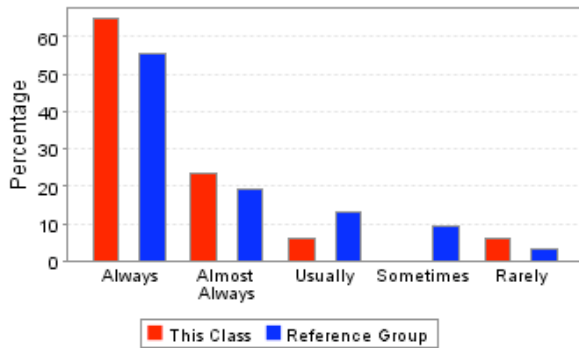
Course	CSD 513, Section 1
Course Title	Speech Science
Instructor	SNYDER GREGORY
Semester	Fall Semester 2008 - 2009
Department	COMMUNICATIVE DISORDERS
School	SCHOOL OF APPLIED SCIENCES
Reference Group	SCHOOL OF APPLIED SCIENCES Graduate Division
Students Enrolled	18
Students Responding	17
Percent Responding	94.44%
Date of Report	Wed Jun 10 10:32:01 CDT 2009

USER CAUTIONS :

- These survey results should not be used for direct comparisons between, or rankings of, faculty. Many factors (including class size, class level, instructor gender, whether the class is required, and the students's class, expected grade, GPA, major, and gender) are known to bias survey responses. No attempt has been made to analyze for these factors.
- The enrollment for each course was captured at the time teacher evaluations were performed and may not match the final enrollment.
- The "Overall Rating" is taken as an average of the responses for question 11 (How would you rate the instructor's overall performance in this course?).

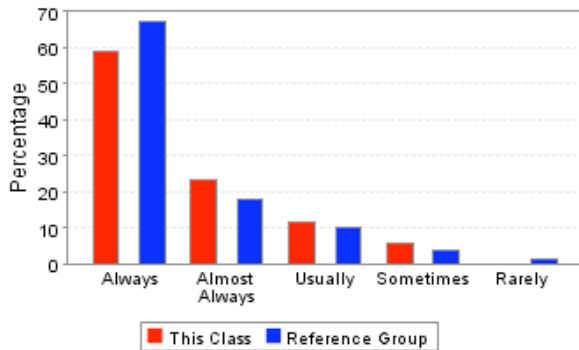
Overall Rating : ★★☆☆

1. Was the instructor well organized and prepared for class sessions?



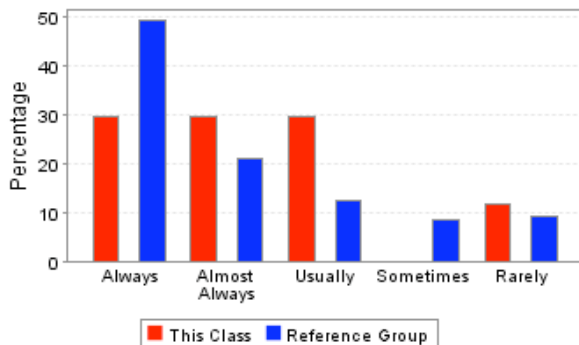
	This Course	Reference Group
Always	64.71%	55.42%
Almost Always	23.53%	19.28%
Usually	5.88%	12.85%
Sometimes	0.00%	9.24%
Rarely	5.88%	3.21%
Total Responses	17	249

2. Did the instructor speak clearly and distinctly?



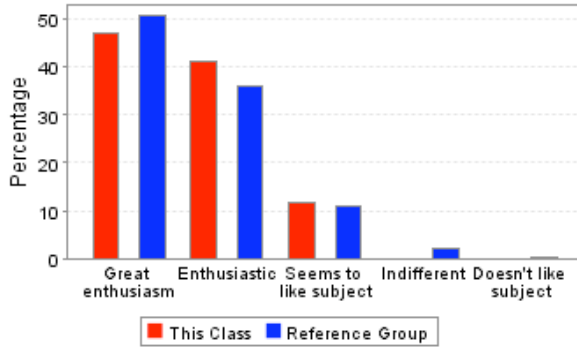
	This Course	Reference Group
Always	58.82%	67.07%
Almost Always	23.53%	18.07%
Usually	11.76%	10.04%
Sometimes	5.88%	3.61%
Rarely	0.00%	1.20%
Total Responses	17	249

3. Did the instructor's classroom lectures and activities help you in learning the material?



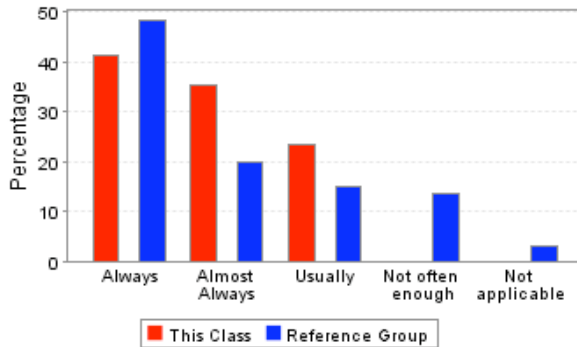
	This Course	Reference Group
Always	29.41%	49.00%
Almost Always	29.41%	20.88%
Usually	29.41%	12.45%
Sometimes	0.00%	8.43%
Rarely	11.76%	9.24%
Total Responses	17	249

4. Which best describes the instructor's attitude toward the subject matter?



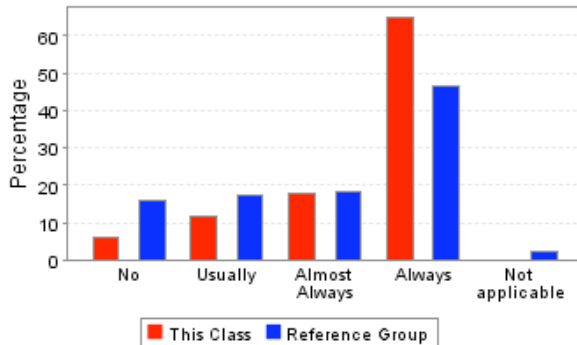
	This Course	Reference Group
Great enthusiasm	47.06%	50.60%
Enthusiastic	41.18%	36.14%
Seems to like subject	11.76%	10.84%
Indifferent	0.00%	2.01%
Doesn't like subject	0.00%	0.40%
Total Responses	17	249

5. Were the examinations appropriate for assessing mastery of the course material?



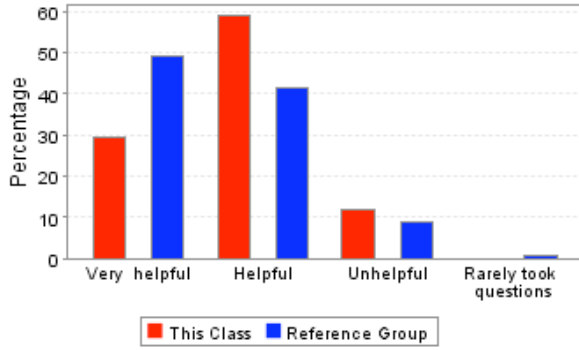
	This Course	Reference Group
Always	41.18%	48.19%
Almost Always	35.29%	20.08%
Usually	23.53%	14.86%
Not often enough	0.00%	13.65%
Not applicable	0.00%	3.21%
Total Responses	17	249

6. Did the instructor return assignments and examinations in a reasonable period of time?



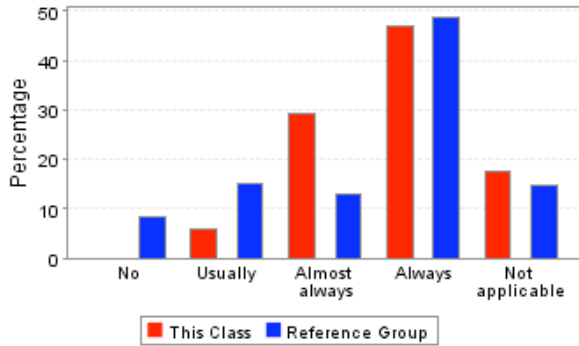
	This Course	Reference Group
No	5.88%	15.66%
Usually	11.76%	17.27%
Almost Always	17.65%	18.47%
Always	64.71%	46.59%
Not applicable	0.00%	2.01%
Total Responses	17	249

7. How helpful were the instructor's responses to students' questions in class?



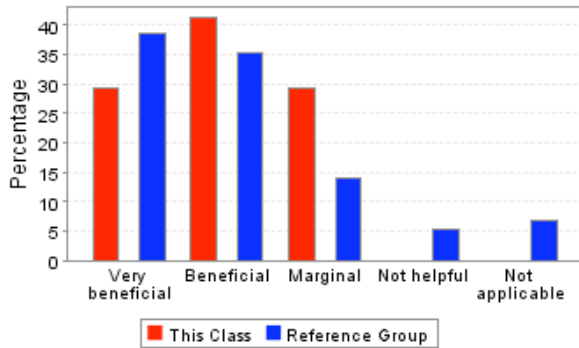
	This Course	Reference Group
Very helpful	29.41%	49.00%
Helpful	58.82%	41.37%
Unhelpful	11.76%	8.84%
Rarely took questions	0.00%	0.80%
Total Responses	17	249

8. If you needed assistance from the instructor outside of class, could you make satisfactory arrangements for a timely meeting?



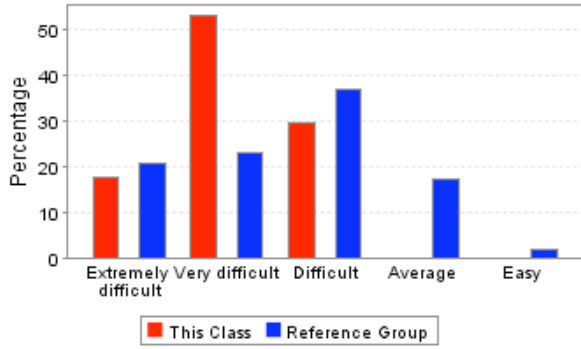
	This Course	Reference Group
No	0.00%	8.43%
Usually	5.88%	15.26%
Almost always	29.41%	12.85%
Always	47.06%	48.59%
Not applicable	17.65%	14.86%
Total Responses	17	249

9. How beneficial were the books required for this course?



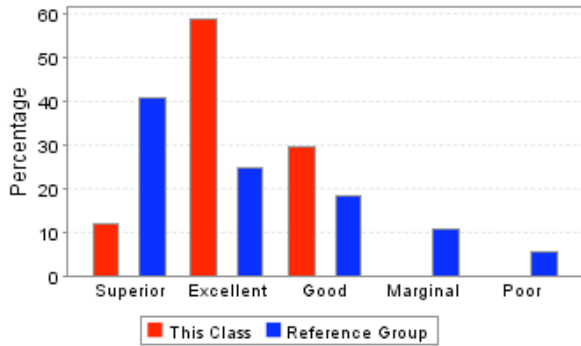
	This Course	Reference Group
Very beneficial	29.41%	38.55%
Beneficial	41.18%	35.34%
Marginal	29.41%	14.06%
Not helpful	0.00%	5.22%
Not applicable	0.00%	6.83%
Total Responses	17	249

10. How would you rate the difficulty level of this course, compared to other courses you have taken so far at Ole Miss?



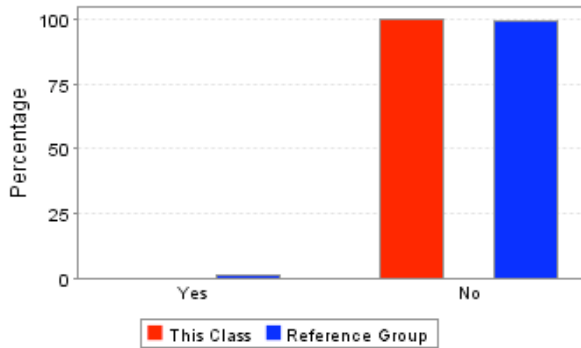
	This Course	Reference Group
Extremely difficult	17.65%	20.86%
Very difficult	52.94%	23.02%
Difficult	29.41%	37.05%
Average	0.00%	17.27%
Easy	0.00%	1.80%
Total Responses	17	278

11. How would you rate the instructor's overall performance in this course?



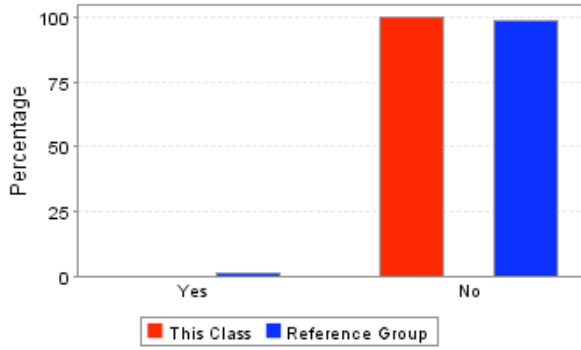
	This Course	Reference Group
Superior	11.76%	40.65%
Excellent	58.82%	24.82%
Good	29.41%	18.35%
Marginal	0.00%	10.79%
Poor	0.00%	5.40%
Total Responses	17	278

12. I observed cheating at least once during a course examination.



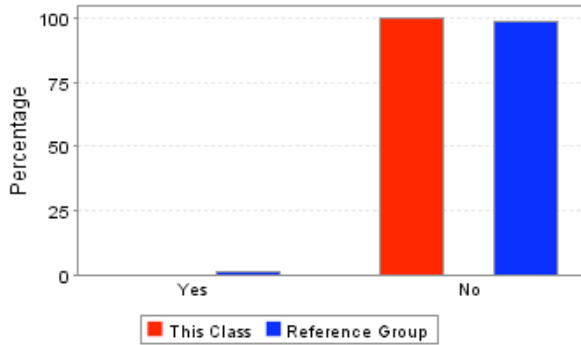
	This Course	Reference Group
Yes	0.00%	0.89%
No	100.00%	99.11%
Total Responses	13	224

13. I observed plagiarism or other cheating on at least one assignment submitted for this course.



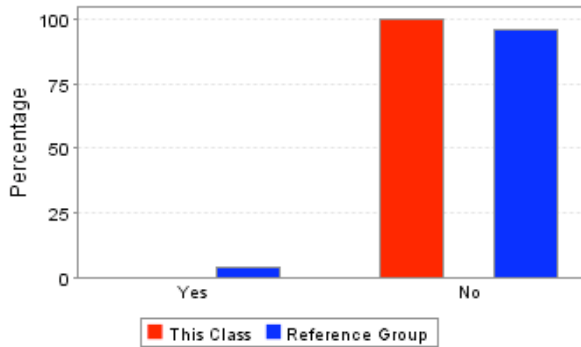
	This Course	Reference Group
Yes	0.00%	1.35%
No	100.00%	98.65%
Total Responses	13	223

14. I observed unethical academic behavior in this course and I reported it to the instructor.



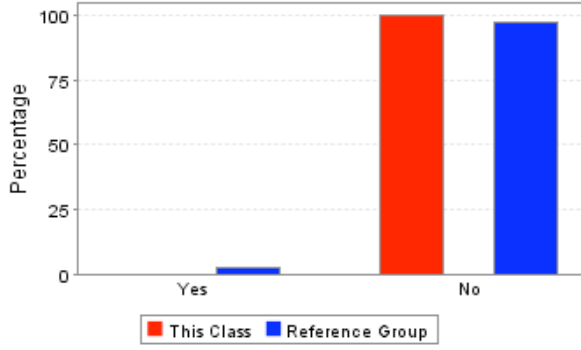
	This Course	Reference Group
Yes	0.00%	1.34%
No	100.00%	98.66%
Total Responses	13	224

15. I heard about, but did not observe, unethical academic behavior in this course.



	This Course	Reference Group
Yes	0.00%	4.00%
No	100.00%	96.00%
Total Responses	13	225

16. The instructor should have done more to discourage academic dishonesty.



	This Course	Reference Group
Yes	0.00%	2.68%
No	100.00%	97.32%
Total Responses	13	224