

## Teacher Evaluation Result - General and Detailed Questions

[Print this page](#) | [Close window](#)**CD 521 : Disorders of Fluency , Section 1**

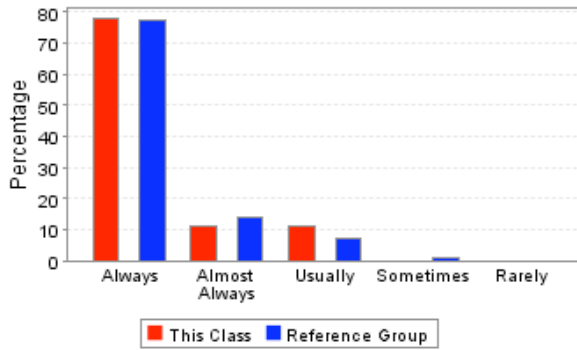
Course	CD 521, Section 1
Course Title	Disorders of Fluency
Instructor	SNYDER GREGORY
Semester	Spring Semester 2007 - 2008
Department	COMMUNICATIVE DISORDERS
School	SCHOOL OF APPLIED SCIENCES
Reference Group	SCHOOL OF APPLIED SCIENCES Graduate Division
Students Enrolled	20
Students Responding	18
Percent Responding	90.00%
Date of Report	Wed Jun 10 10:34:10 CDT 2009

**USER CAUTIONS :**

- These survey results should not be used for direct comparisons between, or rankings of, faculty. Many factors (including class size, class level, instructor gender, whether the class is required, and the students's class, expected grade, GPA, major, and gender) are known to bias survey responses. No attempt has been made to analyze for these factors.
- The enrollment for each course was captured at the time teacher evaluations were performed and may not match the final enrollment.
- The "Overall Rating" is taken as an average of the responses for question 11 (How would you rate the instructor's overall performance in this course?).

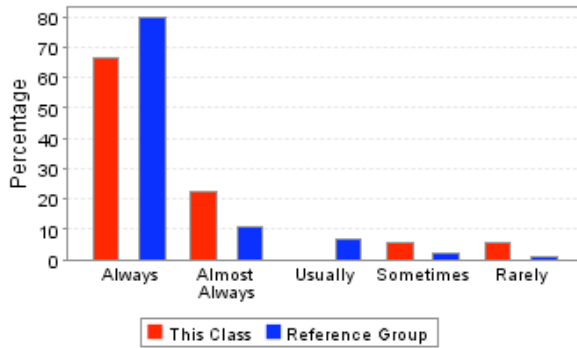
**Overall Rating :** ★★★★★

1. Was the instructor well organized and prepared for class sessions?



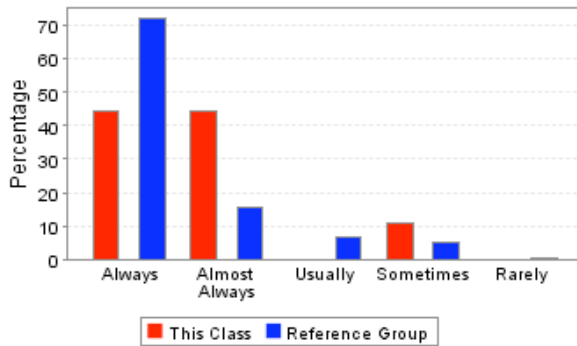
	<b>This Course</b>	<b>Reference Group</b>
Always	77.78%	77.55%
Almost Always	11.11%	14.29%
Usually	11.11%	7.14%
Sometimes	0.00%	1.02%
Rarely	0.00%	0.00%
<b>Total Responses</b>	<b>18</b>	<b>196</b>

2. Did the instructor speak clearly and distinctly?



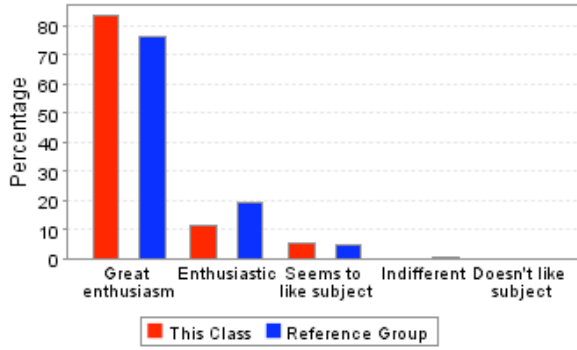
	<b>This Course</b>	<b>Reference Group</b>
Always	66.67%	79.59%
Almost Always	22.22%	10.71%
Usually	0.00%	6.63%
Sometimes	5.56%	2.04%
Rarely	5.56%	1.02%
<b>Total Responses</b>	<b>18</b>	<b>196</b>

3. Did the instructor's classroom lectures and activities help you in learning the material?



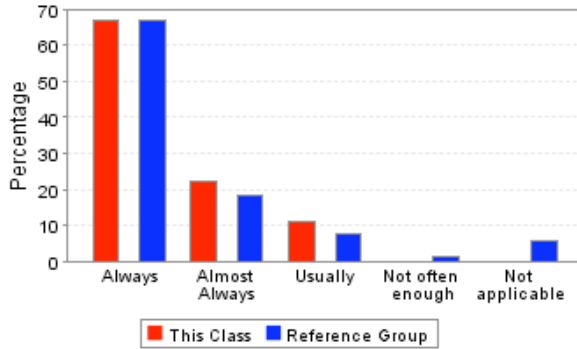
	<b>This Course</b>	<b>Reference Group</b>
Always	44.44%	71.94%
Almost Always	44.44%	15.82%
Usually	0.00%	6.63%
Sometimes	11.11%	5.10%
Rarely	0.00%	0.51%
<b>Total Responses</b>	<b>18</b>	<b>196</b>

4. Which best describes the instructor's attitude toward the subject matter?



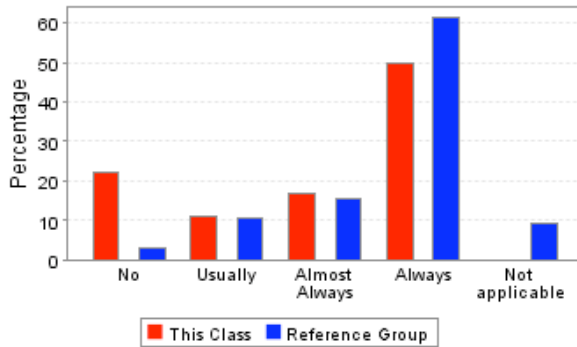
	<b>This Course</b>	<b>Reference Group</b>
Great enthusiasm	83.33%	75.98%
Enthusiastic	11.11%	19.12%
Seems to like subject	5.56%	4.41%
Indifferent	0.00%	0.49%
Doesn't like subject	0.00%	0.00%
<b>Total Responses</b>	<b>18</b>	<b>204</b>

5. Were the examinations appropriate for assessing mastery of the course material?



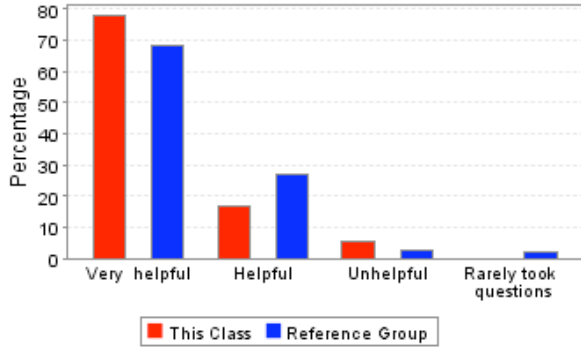
	<b>This Course</b>	<b>Reference Group</b>
Always	66.67%	66.67%
Almost Always	22.22%	18.14%
Usually	11.11%	7.84%
Not often enough	0.00%	1.47%
Not applicable	0.00%	5.88%
<b>Total Responses</b>	<b>18</b>	<b>204</b>

6. Did the instructor return assignments and examinations in a reasonable period of time?



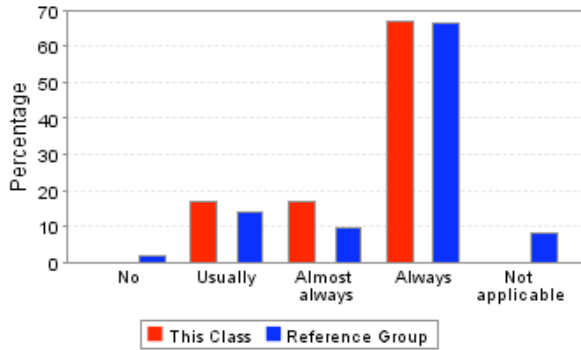
	<b>This Course</b>	<b>Reference Group</b>
No	22.22%	2.94%
Usually	11.11%	10.78%
Almost Always	16.67%	15.69%
Always	50.00%	61.27%
Not applicable	0.00%	9.31%
<b>Total Responses</b>	<b>18</b>	<b>204</b>

7. How helpful were the instructor's responses to students' questions in class?



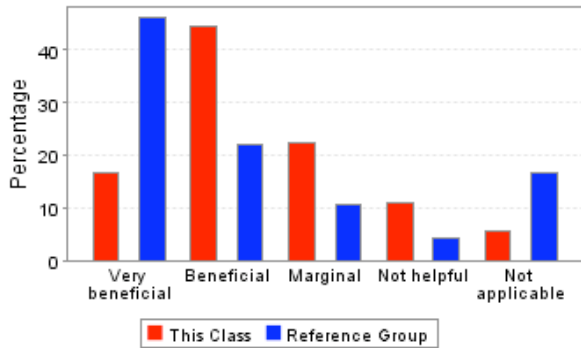
	<b>This Course</b>	<b>Reference Group</b>
Very helpful	77.78%	68.37%
Helpful	16.67%	27.04%
Unhelpful	5.56%	2.55%
Rarely took questions	0.00%	2.04%
<b>Total Responses</b>	<b>18</b>	<b>196</b>

8. If you needed assistance from the instructor outside of class, could you make satisfactory arrangements for a timely meeting?



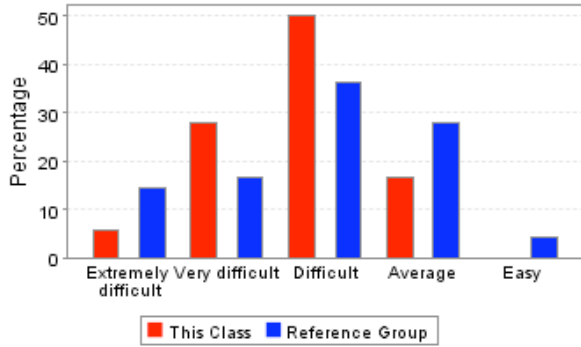
	<b>This Course</b>	<b>Reference Group</b>
No	0.00%	2.04%
Usually	16.67%	13.78%
Almost always	16.67%	9.69%
Always	66.67%	66.33%
Not applicable	0.00%	8.16%
<b>Total Responses</b>	<b>18</b>	<b>196</b>

9. How beneficial were the books required for this course?



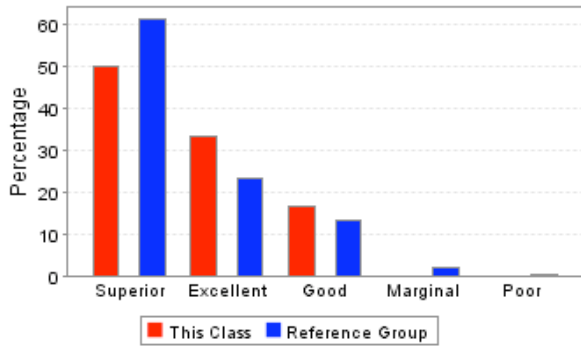
	<b>This Course</b>	<b>Reference Group</b>
Very beneficial	16.67%	46.08%
Beneficial	44.44%	22.06%
Marginal	22.22%	10.78%
Not helpful	11.11%	4.41%
Not applicable	5.56%	16.67%
<b>Total Responses</b>	<b>18</b>	<b>204</b>

10. How would you rate the difficulty level of this course, compared to other courses you have taken so far at Ole Miss?



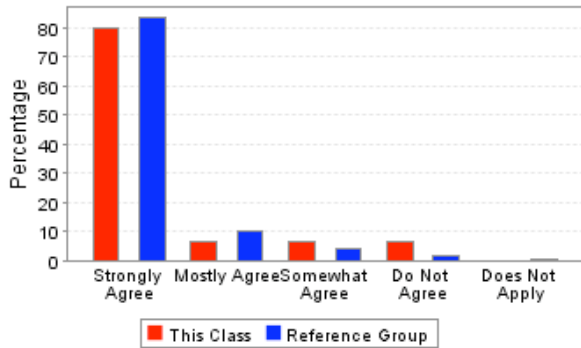
	<b>This Course</b>	<b>Reference Group</b>
Extremely difficult	5.56%	14.47%
Very difficult	27.78%	16.67%
Difficult	50.00%	36.40%
Average	16.67%	28.07%
Easy	0.00%	4.39%
<b>Total Responses</b>	<b>18</b>	<b>228</b>

11. How would you rate the instructor's overall performance in this course?



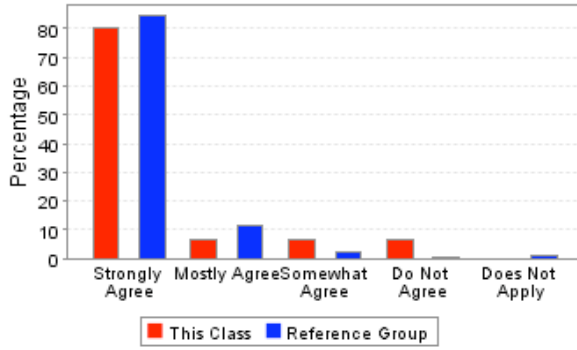
	<b>This Course</b>	<b>Reference Group</b>
Superior	50.00%	61.40%
Excellent	33.33%	23.25%
Good	16.67%	13.16%
Marginal	0.00%	1.75%
Poor	0.00%	0.44%
<b>Total Responses</b>	<b>18</b>	<b>228</b>

12. The students and the instructor treated each other with dignity and respect.



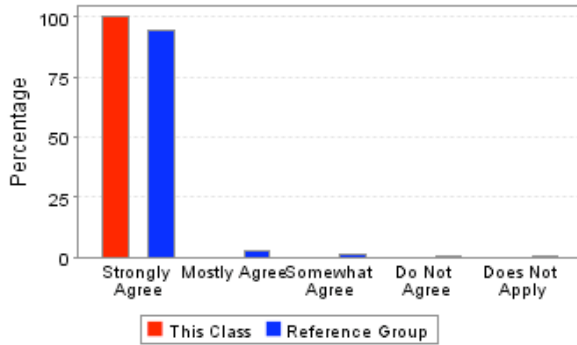
	<b>This Course</b>	<b>Reference Group</b>
Strongly Agree	80.00%	83.13%
Mostly Agree	6.67%	10.24%
Somewhat Agree	6.67%	4.22%
Do Not Agree	6.67%	1.81%
Does Not Apply	0.00%	0.60%
<b>Total Responses</b>	<b>15</b>	<b>166</b>

13. The instructor(s) displayed personal and professional integrity at all times.



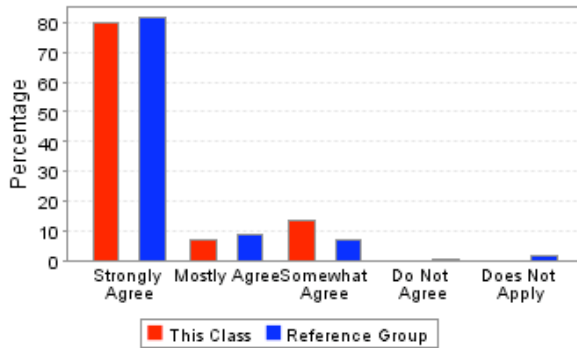
	<b>This Course</b>	<b>Reference Group</b>
Strongly Agree	80.00%	84.34%
Mostly Agree	6.67%	11.45%
Somewhat Agree	6.67%	2.41%
Do Not Agree	6.67%	0.60%
Does Not Apply	0.00%	1.20%
<b>Total Responses</b>	<b>15</b>	<b>166</b>

14. All students, including myself, practiced academic honesty at all times.



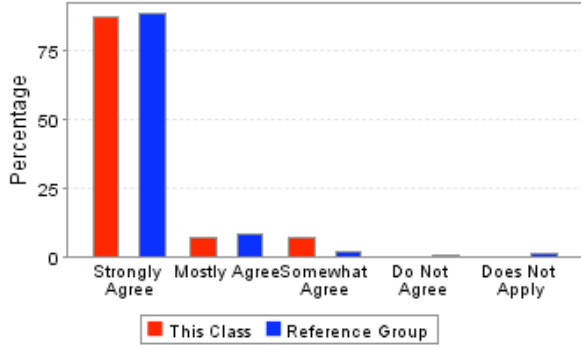
	<b>This Course</b>	<b>Reference Group</b>
Strongly Agree	100.00%	94.61%
Mostly Agree	0.00%	2.99%
Somewhat Agree	0.00%	1.20%
Do Not Agree	0.00%	0.60%
Does Not Apply	0.00%	0.60%
<b>Total Responses</b>	<b>15</b>	<b>167</b>

15. The students were allowed to express different points of view (e.g., exercise academic freedom) without fear of recourse from the instructor.



	<b>This Course</b>	<b>Reference Group</b>
Strongly Agree	80.00%	81.44%
Mostly Agree	6.67%	8.98%
Somewhat Agree	13.33%	7.19%
Do Not Agree	0.00%	0.60%
Does Not Apply	0.00%	1.80%
<b>Total Responses</b>	<b>15</b>	<b>167</b>

16. The ideals of the University Creed were upheld.



	<b>This Course</b>	<b>Reference Group</b>
Strongly Agree	86.67%	87.95%
Mostly Agree	6.67%	8.43%
Somewhat Agree	6.67%	1.81%
Do Not Agree	0.00%	0.60%
Does Not Apply	0.00%	1.20%
<b>Total Responses</b>	<b>15</b>	<b>166</b>