

## Teacher Evaluation Result - General and Detailed Questions

[Print this page](#) | [Close window](#)**CSD 405 : Fluency and Voice Disorders , Section 1**

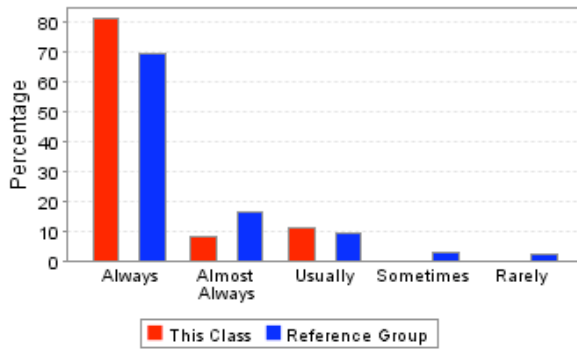
Course	CSD 405, Section 1
Course Title	Fluency and Voice Disorders
Instructor	SNYDER GREGORY
Semester	Spring Semester 2008 - 2009
Department	COMMUNICATIVE DISORDERS
School	SCHOOL OF APPLIED SCIENCES
Reference Group	SCHOOL OF APPLIED SCIENCES Upper Division
Students Enrolled	43
Students Responding	37
Percent Responding	86.05%
Date of Report	Wed Jun 10 10:34:55 CDT 2009

**USER CAUTIONS :**

- These survey results should not be used for direct comparisons between, or rankings of, faculty. Many factors (including class size, class level, instructor gender, whether the class is required, and the students's class, expected grade, GPA, major, and gender) are known to bias survey responses. No attempt has been made to analyze for these factors.
- The enrollment for each course was captured at the time teacher evaluations were performed and may not match the final enrollment.
- The "Overall Rating" is taken as an average of the responses for question 11 (How would you rate the instructor's overall performance in this course?).

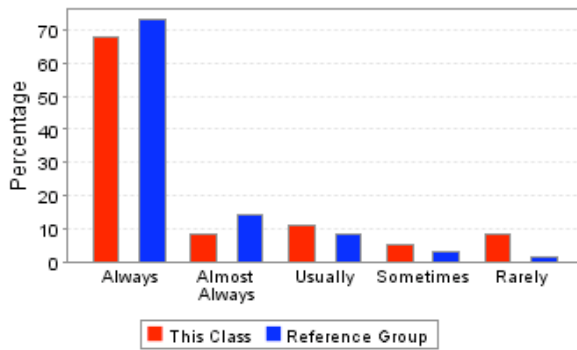
**Overall Rating :** ★★★★★

1. Was the instructor well organized and prepared for class sessions?



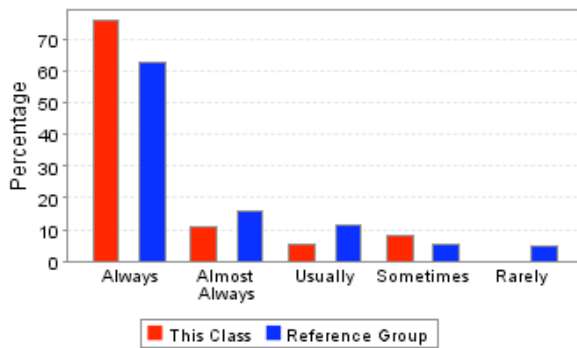
	<b>This Course</b>	<b>Reference Group</b>
Always	81.08%	69.58%
Almost Always	8.11%	16.37%
Usually	10.81%	9.14%
Sometimes	0.00%	2.91%
Rarely	0.00%	2.00%
<b>Total Responses</b>	<b>37</b>	<b>2199</b>

2. Did the instructor speak clearly and distinctly?



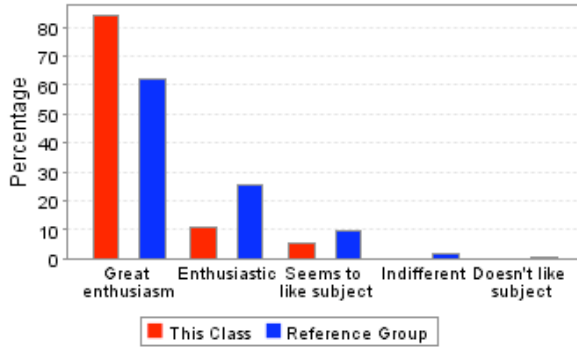
	<b>This Course</b>	<b>Reference Group</b>
Always	67.57%	72.94%
Almost Always	8.11%	14.37%
Usually	10.81%	8.19%
Sometimes	5.41%	2.82%
Rarely	8.11%	1.68%
<b>Total Responses</b>	<b>37</b>	<b>2199</b>

3. Did the instructor's classroom lectures and activities help you in learning the material?



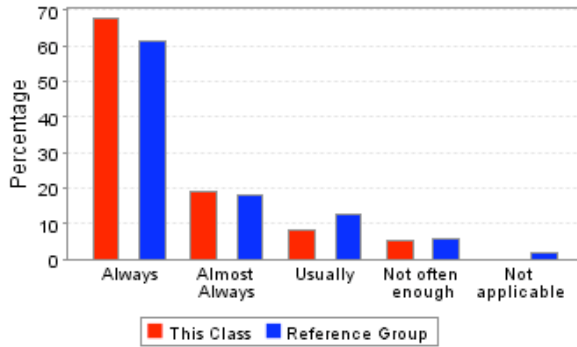
	<b>This Course</b>	<b>Reference Group</b>
Always	75.68%	62.62%
Almost Always	10.81%	15.83%
Usually	5.41%	11.28%
Sometimes	8.11%	5.50%
Rarely	0.00%	4.77%
<b>Total Responses</b>	<b>37</b>	<b>2199</b>

4. Which best describes the instructor's attitude toward the subject matter?



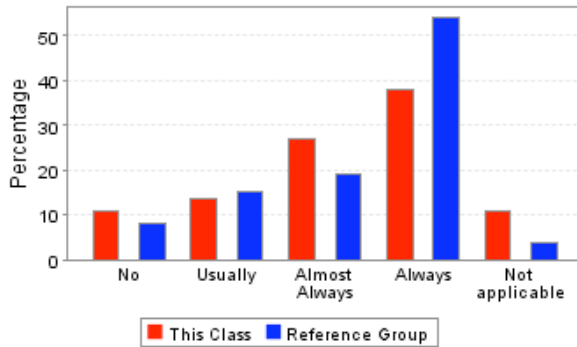
	<b>This Course</b>	<b>Reference Group</b>
Great enthusiasm	83.78%	62.31%
Enthusiastic	10.81%	25.56%
Seems to like subject	5.41%	9.81%
Indifferent	0.00%	1.87%
Doesn't like subject	0.00%	0.45%
<b>Total Responses</b>	<b>37</b>	<b>2242</b>

5. Were the examinations appropriate for assessing mastery of the course material?



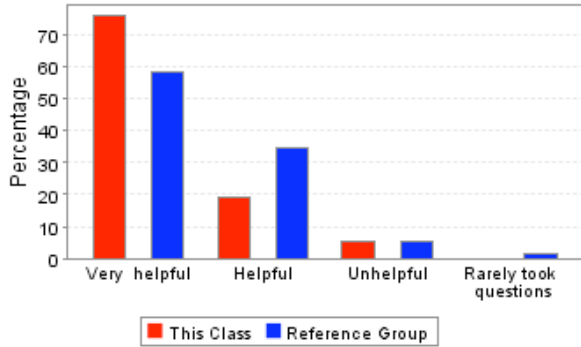
	<b>This Course</b>	<b>Reference Group</b>
Always	67.57%	61.46%
Almost Always	18.92%	17.98%
Usually	8.11%	12.85%
Not often enough	5.41%	5.89%
Not applicable	0.00%	1.83%
<b>Total Responses</b>	<b>37</b>	<b>2242</b>

6. Did the instructor return assignments and examinations in a reasonable period of time?



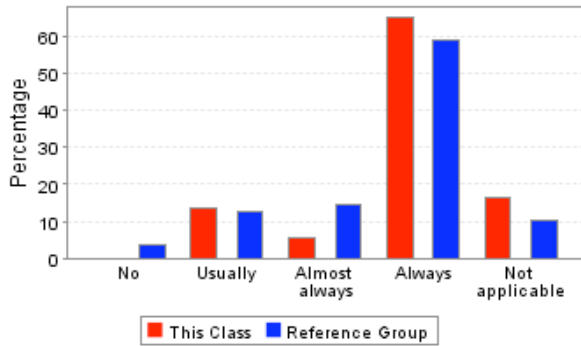
	<b>This Course</b>	<b>Reference Group</b>
No	10.81%	8.03%
Usually	13.51%	15.08%
Almost Always	27.03%	19.22%
Always	37.84%	53.88%
Not applicable	10.81%	3.79%
<b>Total Responses</b>	<b>37</b>	<b>2242</b>

7. How helpful were the instructor's responses to students' questions in class?



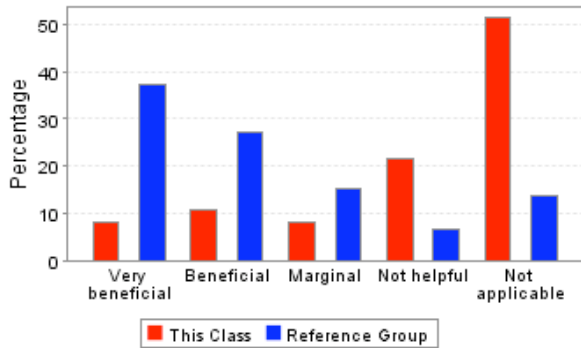
	<b>This Course</b>	<b>Reference Group</b>
Very helpful	75.68%	58.30%
Helpful	18.92%	34.79%
Unhelpful	5.41%	5.59%
Rarely took questions	0.00%	1.32%
<b>Total Responses</b>	<b>37</b>	<b>2199</b>

8. If you needed assistance from the instructor outside of class, could you make satisfactory arrangements for a timely meeting?



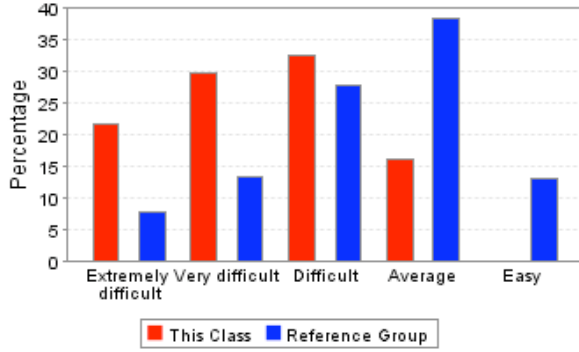
	<b>This Course</b>	<b>Reference Group</b>
No	0.00%	3.77%
Usually	13.51%	12.69%
Almost always	5.41%	14.69%
Always	64.86%	58.80%
Not applicable	16.22%	10.05%
<b>Total Responses</b>	<b>37</b>	<b>2199</b>

9. How beneficial were the books required for this course?



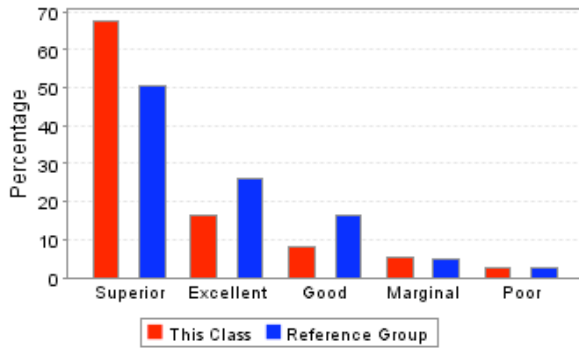
	<b>This Course</b>	<b>Reference Group</b>
Very beneficial	8.11%	37.15%
Beneficial	10.81%	27.07%
Marginal	8.11%	15.17%
Not helpful	21.62%	6.78%
Not applicable	51.35%	13.83%
<b>Total Responses</b>	<b>37</b>	<b>2242</b>

10. How would you rate the difficulty level of this course, compared to other courses you have taken so far at Ole Miss?



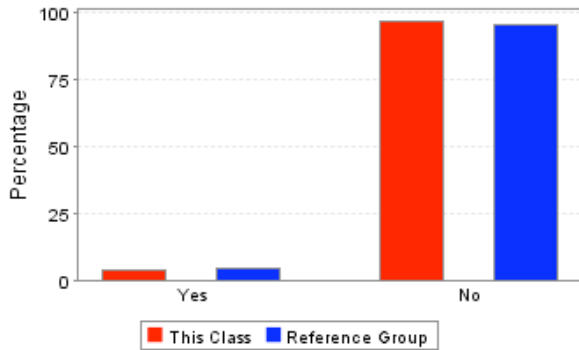
	<b>This Course</b>	<b>Reference Group</b>
Extremely difficult	21.62%	7.69%
Very difficult	29.73%	13.19%
Difficult	32.43%	27.82%
Average	16.22%	38.26%
Easy	0.00%	13.03%
<b>Total Responses</b>	<b>37</b>	<b>2509</b>

11. How would you rate the instructor's overall performance in this course?



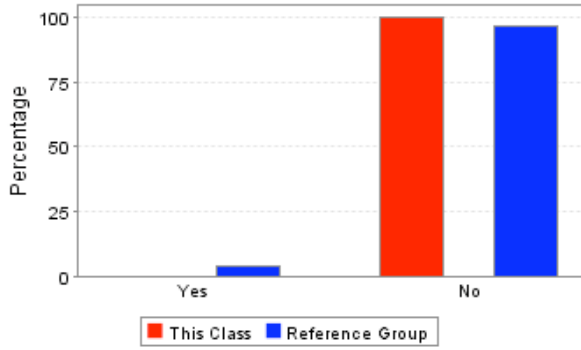
	<b>This Course</b>	<b>Reference Group</b>
Superior	67.57%	50.46%
Excellent	16.22%	26.03%
Good	8.11%	16.34%
Marginal	5.41%	4.82%
Poor	2.70%	2.35%
<b>Total Responses</b>	<b>37</b>	<b>2509</b>

12. I observed cheating at least once during a course examination.



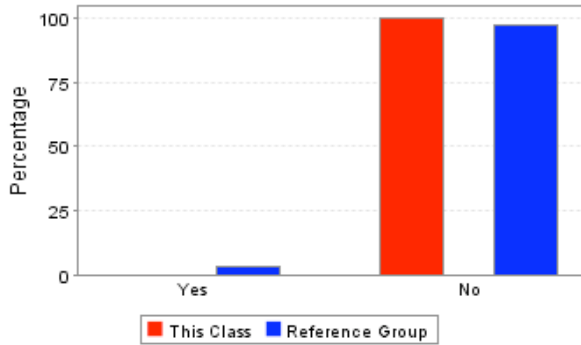
	<b>This Course</b>	<b>Reference Group</b>
Yes	3.45%	4.59%
No	96.55%	95.41%
<b>Total Responses</b>	<b>29</b>	<b>1851</b>

13. I observed plagiarism or other cheating on at least one assignment submitted for this course.



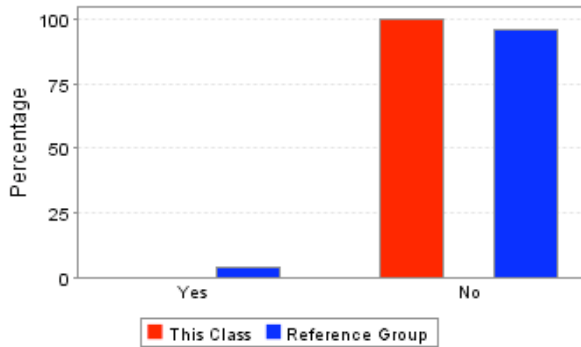
	<b>This Course</b>	<b>Reference Group</b>
Yes	0.00%	3.58%
No	100.00%	96.42%
<b>Total Responses</b>	<b>29</b>	<b>1845</b>

14. I observed unethical academic behavior in this course and I reported it to the instructor.



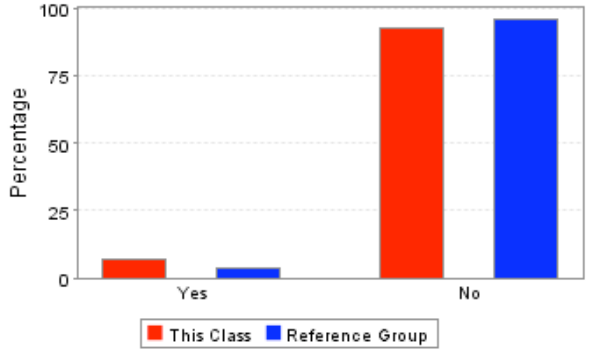
	<b>This Course</b>	<b>Reference Group</b>
Yes	0.00%	3.10%
No	100.00%	96.90%
<b>Total Responses</b>	<b>28</b>	<b>1836</b>

15. I heard about, but did not observe, unethical academic behavior in this course.



	<b>This Course</b>	<b>Reference Group</b>
Yes	0.00%	4.14%
No	100.00%	95.86%
<b>Total Responses</b>	<b>28</b>	<b>1836</b>

16. The instructor should have done more to discourage academic dishonesty.



	<b>This Course</b>	<b>Reference Group</b>
Yes	7.14%	3.85%
No	92.86%	96.15%
<b>Total Responses</b>	<b>28</b>	<b>1842</b>