

Teacher Evaluation Result - General and Detailed Questions

[Print this page](#) | [Close window](#)**CSD 521 : Disorders of Fluency , Section 1**

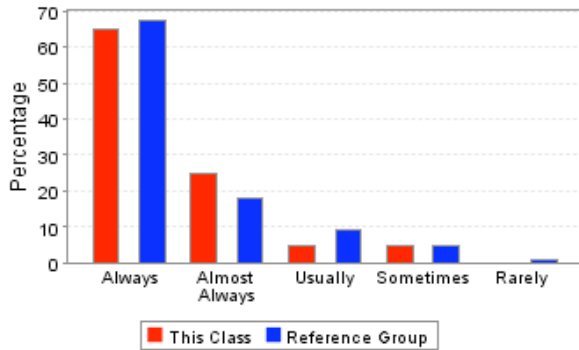
Course	CSD 521, Section 1
Course Title	Disorders of Fluency
Instructor	SNYDER GREGORY
Semester	Spring Semester 2008 - 2009
Department	COMMUNICATIVE DISORDERS
School	SCHOOL OF APPLIED SCIENCES
Reference Group	SCHOOL OF APPLIED SCIENCES Graduate Division
Students Enrolled	21
Students Responding	20
Percent Responding	95.24%
Date of Report	Wed Jun 10 10:36:58 CDT 2009

USER CAUTIONS :

- These survey results should not be used for direct comparisons between, or rankings of, faculty. Many factors (including class size, class level, instructor gender, whether the class is required, and the students's class, expected grade, GPA, major, and gender) are known to bias survey responses. No attempt has been made to analyze for these factors.
- The enrollment for each course was captured at the time teacher evaluations were performed and may not match the final enrollment.
- The "Overall Rating" is taken as an average of the responses for question 11 (How would you rate the instructor's overall performance in this course?).

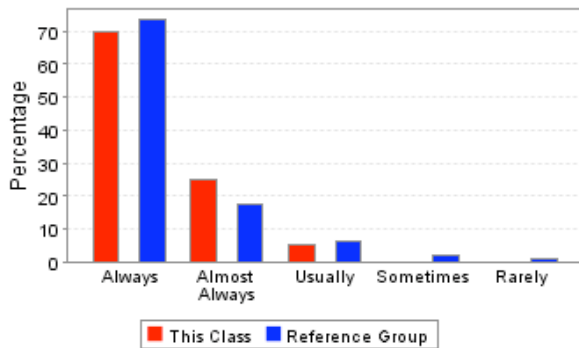
Overall Rating : ★★★★★

1. Was the instructor well organized and prepared for class sessions?



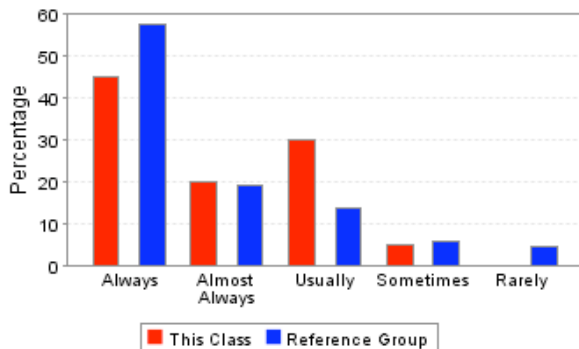
	This Course	Reference Group
Always	65.00%	67.24%
Almost Always	25.00%	18.10%
Usually	5.00%	9.05%
Sometimes	5.00%	4.74%
Rarely	0.00%	0.86%
Total Responses	20	232

2. Did the instructor speak clearly and distinctly?



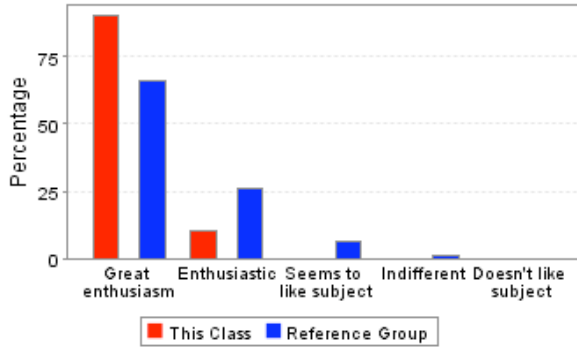
	This Course	Reference Group
Always	70.00%	73.28%
Almost Always	25.00%	17.24%
Usually	5.00%	6.47%
Sometimes	0.00%	2.16%
Rarely	0.00%	0.86%
Total Responses	20	232

3. Did the instructor's classroom lectures and activities help you in learning the material?



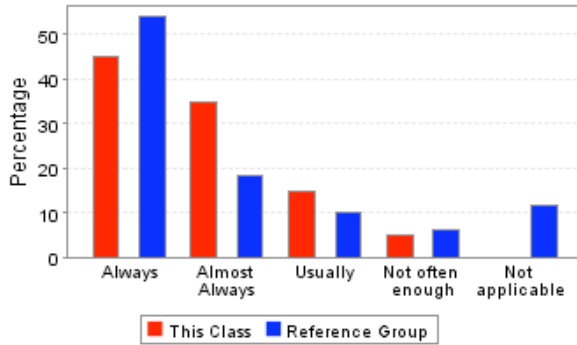
	This Course	Reference Group
Always	45.00%	57.33%
Almost Always	20.00%	18.97%
Usually	30.00%	13.79%
Sometimes	5.00%	5.60%
Rarely	0.00%	4.31%
Total Responses	20	232

4. Which best describes the instructor's attitude toward the subject matter?



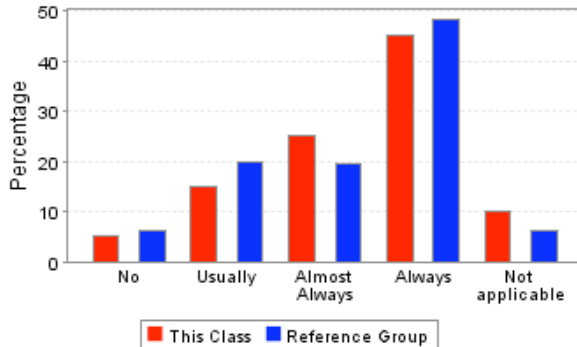
	This Course	Reference Group
Great enthusiasm	90.00%	65.98%
Enthusiastic	10.00%	26.14%
Seems to like subject	0.00%	6.64%
Indifferent	0.00%	1.24%
Doesn't like subject	0.00%	0.00%
Total Responses	20	241

5. Were the examinations appropriate for assessing mastery of the course material?



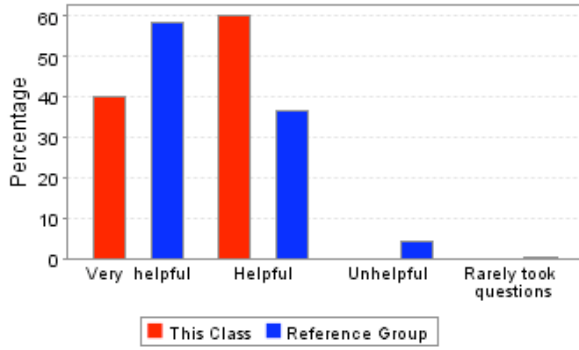
	This Course	Reference Group
Always	45.00%	53.94%
Almost Always	35.00%	18.26%
Usually	15.00%	9.96%
Not often enough	5.00%	6.22%
Not applicable	0.00%	11.62%
Total Responses	20	241

6. Did the instructor return assignments and examinations in a reasonable period of time?



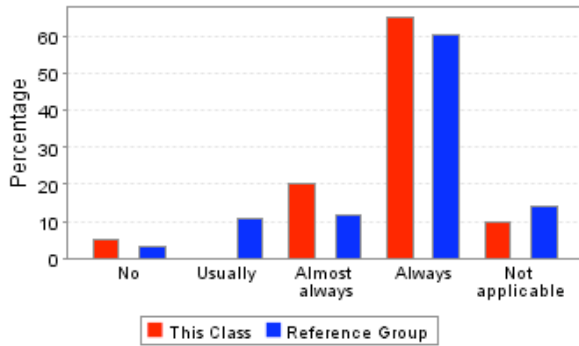
	This Course	Reference Group
No	5.00%	6.22%
Usually	15.00%	19.92%
Almost Always	25.00%	19.50%
Always	45.00%	48.13%
Not applicable	10.00%	6.22%
Total Responses	20	241

7. How helpful were the instructor's responses to students' questions in class?



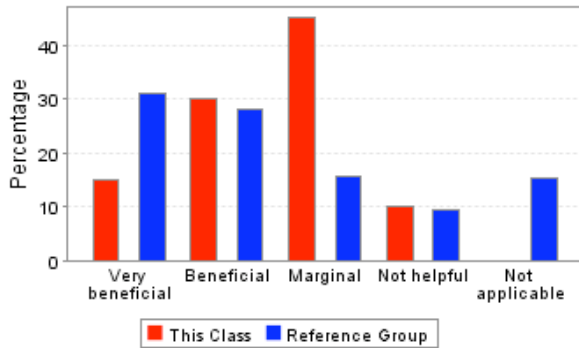
	This Course	Reference Group
Very helpful	40.00%	58.62%
Helpful	60.00%	36.64%
Unhelpful	0.00%	4.31%
Rarely took questions	0.00%	0.43%
Total Responses	20	232

8. If you needed assistance from the instructor outside of class, could you make satisfactory arrangements for a timely meeting?



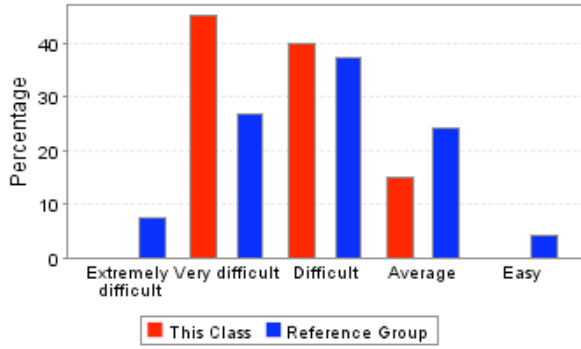
	This Course	Reference Group
No	5.00%	3.02%
Usually	0.00%	10.78%
Almost always	20.00%	11.64%
Always	65.00%	60.34%
Not applicable	10.00%	14.22%
Total Responses	20	232

9. How beneficial were the books required for this course?



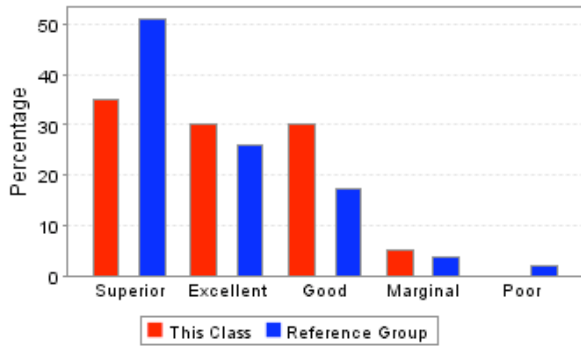
	This Course	Reference Group
Very beneficial	15.00%	31.12%
Beneficial	30.00%	28.22%
Marginal	45.00%	15.77%
Not helpful	10.00%	9.54%
Not applicable	0.00%	15.35%
Total Responses	20	241

10. How would you rate the difficulty level of this course, compared to other courses you have taken so far at Ole Miss?



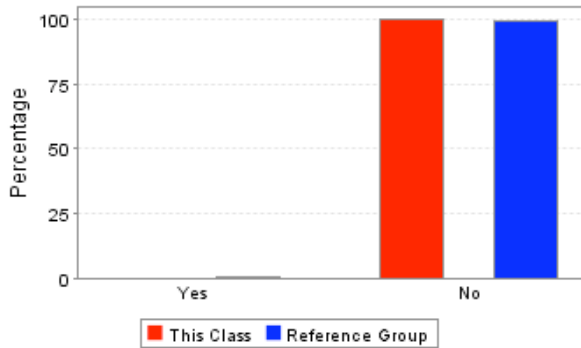
	This Course	Reference Group
Extremely difficult	0.00%	7.46%
Very difficult	45.00%	26.87%
Difficult	40.00%	37.31%
Average	15.00%	24.25%
Easy	0.00%	4.10%
Total Responses	20	268

11. How would you rate the instructor's overall performance in this course?



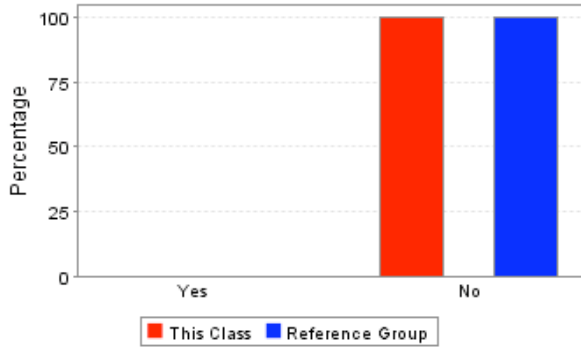
	This Course	Reference Group
Superior	35.00%	51.12%
Excellent	30.00%	26.12%
Good	30.00%	17.16%
Marginal	5.00%	3.73%
Poor	0.00%	1.87%
Total Responses	20	268

12. I observed cheating at least once during a course examination.



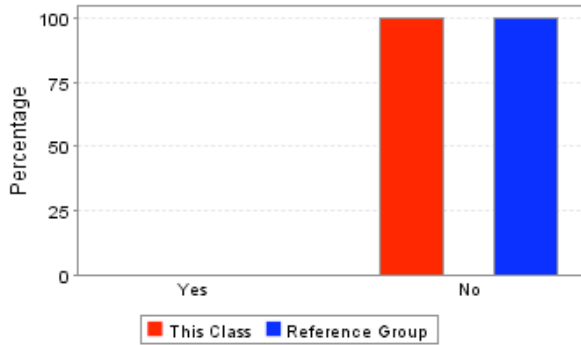
	This Course	Reference Group
Yes	0.00%	0.49%
No	100.00%	99.51%
Total Responses	17	205

13. I observed plagiarism or other cheating on at least one assignment submitted for this course.



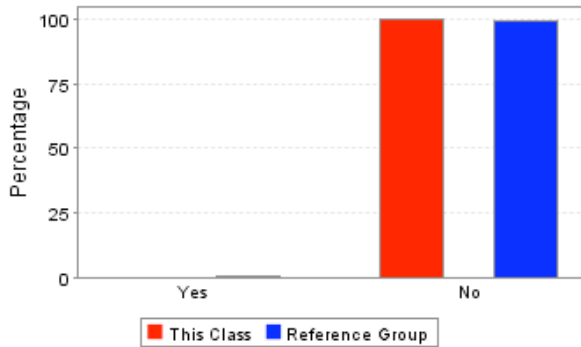
	This Course	Reference Group
Yes	0.00%	0.00%
No	100.00%	100.00%
Total Responses	17	205

14. I observed unethical academic behavior in this course and I reported it to the instructor.



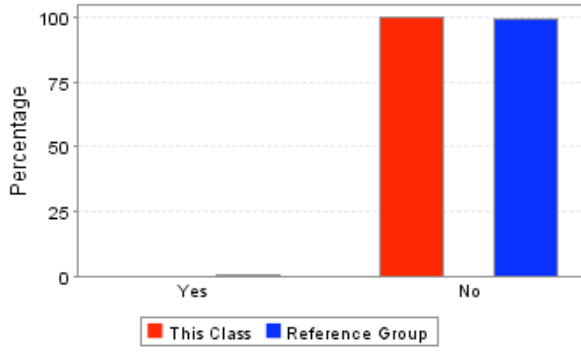
	This Course	Reference Group
Yes	0.00%	0.00%
No	100.00%	100.00%
Total Responses	16	203

15. I heard about, but did not observe, unethical academic behavior in this course.



	This Course	Reference Group
Yes	0.00%	0.49%
No	100.00%	99.51%
Total Responses	17	203

16. The instructor should have done more to discourage academic dishonesty.



	This Course	Reference Group
Yes	0.00%	0.49%
No	100.00%	99.51%
Total Responses	17	205